



## UUPlus Personal User Guide

Updated: 03/15/04

### Table of Contents

Section	Title	Page
1	Getting Started _____	2
2	Installation _____	3
3	UUPlus Personal Console _____	6
4	General Tab _____	9
5	Calling Tab _____	12
6	Limits / Filters _____	15
7	Fetch / Notify _____	17
8	Modems _____	19
9	Using UUPlus Personal _____	29
10	Setting up Mailers _____	37
11	The UUPlus Mailer _____	45
12	UUPlus Logs _____	48
13	Outbound Queue _____	55

## 1.0 Getting Started.

### Overview:

This User Guide describes the installation, configuration, and operation of UUPlus Personal software.

UUPlus software is specifically designed for Internet based email and file transfer over slow and/or error prone connections such as mobile satellite phones, cellular phones, HF/VHF modems, poor land lines, as well as over Mobile Packet Data Service and high-speed Internet connections. The software is distributed as part of the UUPlus Satellite Email Service or is sold as a deployed systems solution for private networks and satellite ISP providers.

UUPlus "Personal" is sometimes referred to as either the "Standard" or "Pro" version. The standard version will only connect to UUPlus Satellite Email Service, whereas the "Pro" version is identical to the standard version with the exception that the Pro version requires a key so it can connect to a private network, not just UUPlus.com's servers.

This user guide is not intended to provide instructions for configuration and/or usage of a personal computer, Windows, a network, or any mail client outside of their relationship with UUPlus software.

### 1.1 Minimum System Requirements:

- Processor speed: 166Mhz
- RAM: 32MB
- Disk space: Minimum 10MB (varies according to the amount of in/outbound mail)
- One serial port (or USB port with a functional USB to serial adapter)
- Operating system: Windows 95 (OEM B) or later

### 1.2 Getting Help:

The following is a list of the available Help features UUPlus has to assist you:

- Press: <F1> For context sensitive "pop up" help in UUPlus.
- Press: <F2> To view this user guide in Adobe Acrobat Reader.
- CDROM: Contains documentation and quick start guides in the "\Help" directory.
- Email support is available via: [support@uuplus.com](mailto:support@uuplus.com)
- Our website has documentation at: <http://www.uuplus.com/support.html>
- Phone: +1.805.534.1425 (M-F 7:00 AM - 5:00 PM PST)

## 2.0 Installation.

**\*\* Note \*\*** If you are upgrading from a previous version, please exit UUPlus Personal before installing the new software.

### 2.1 Installing from the CD:

1. Place the UUPlus CD in the CD-ROM. The UUPlus CD should automatically start.
2. If the CD does not automatically start, access the CD-ROM and open [setup.exe].
3. The UUPlus Installation window should appear. Select [**UUPlus Personal**] to begin the installation process.
4. Follow the instructions on the screen.

### 2.2 Installing from the Web:

1. Go to <http://www.uuplus.com/>
2. Download the Personal software.
3. Run the file Personal.exe after the download is complete.

### 2.3 Setting Up Personal for the First Time.

A dialog box will appear displaying your installation options. You have the option of connecting to **UUPlus Satellite Email Service** or setting up UUPlus Personal for use in a **Private Email Network**.

If you are connecting to a SOHO server some of the features in UUPlus Personal might not be supported by the SOHO server you are connecting to.

#### 2.3.1 Setup Information.

Read the informational screen and click [**OK**] to begin.

#### 2.3.2 Setup Type.

- **New Account.** If you would like to request a new UUPlus Satellite Email Service account, click the [**New**] button. An informational screen will be displayed and then you will be prompted to configure your modem and calling options.
- **Existing Account.** If you already have an existing UUPlus Satellite Email Service account, click the [**Existing**] button. You will be prompted to enter your UUPlus username and password before configuring the modem.
- **Pro Install.** If you are installing UUPlus Personal to connect to a private email network, click the [**Pro**] button.

#### 2.3.3 Pro Version Product Key.

If you are installing UUPlus Personal to connect to a private email network, you will be prompted to enter the UUPlus Personal Product Key provided to you by UUPlus, your UUPlus dealer, or your network administrator. UUPlus software will not connect to a private email network without a valid product key. If you are installing more than one UUPlus Personal Pro you must enter a different key for each remote user in the system or the server will reject the connection.

If your software key has been provided in file form, click the [**Import Key**] button, navigate to the location of the file and import it.

#### 2.3.4 User Name.

Enter your user name as it is set up on the server you connect to. The "username" is the part of an email address before the "@" sign. You will also use this in your mailer for the Login

setting.

Example:       Your.Name

### 2.3.5 Password.

Enter the password used to log into the server you connect to. You will also use this in your mailer for the password setting.

Example:       letmein

### 2.3.6 Pro Version Domain Name.

Enter the domain of the server you connect to. This is the part of an address after the “@” sign.

Example:       mydomain.ext

### 2.3.7 Pro Version Dial String.

Enter the string to dial to connect to your server. This can be a phone number, HF station ID, or an IP address.

Examples       001.800.555.1212  
                  1001  
                  192.168.0.3

### 2.3.8 Select Modem.

Select the modem type you will be using from the **Available Modems** list and click **[Add]**.

UUPlus supported “+” modems and all Windows installed modems are listed. UUPlus supported modems are indicated by a preceding “+” symbol. You will find a listing for a number of satellite phones, cell phones, several high quality land line modems, and for the Pro install, several HF and VHF modems.

If your cellular phone, external modem, or internal modem is not listed, UUPlus recommends using the **+Default Modem** unless there is a software driver required to use it, in that case you must use it's Windows installed modem (listed at the end of the list).

If you are using Mobile Packet Data Service (MPDS), an Inmarsat M4, B GAN, a local ISP dial-up, or connecting to a dedicated cell phone Internet access gateway, you will be using UUPlus VPN. Select either **+UUPlus VPN Secure IP Connection** or if you will be using Windows Dial-up Networking, one of the **+VPN - (DUN Entry)** "modems" at the end of the list.

If you are using a Mini-m, under most circumstances you will use the **+9600 baud Mini-M**. The +2400 baud Mini-m is provided for older units that have a 2400 baud interface.

If you are using Codan equipment, select the **+Codan HF Data Modem** that matches your equipment. If you have problems and have an older 9002 that has not been upgraded or are using the original serial cable that came with it (from the mid-1990s), select the “+Codan HF Data Modem (Older 9002)” modem.

If you are using SCS Pactor equipment, select the **+SCS Pactor II** that matches your equipment.

### 2.3.9 HF Station ID.

If you selected a HF or VHF modem you will be prompted to enter your station ID (call sign). Be sure you enter a valid station ID as some HF modems get fussy if this value is left blank.

If you have **Codan** equipment, you should not use a station ID that ends in “00” as these are reserved. For newer NGT Codan equipment, you are allowed up to a 6 digit address. In older equipment, you are allowed up to a 4 digit address. Consult the documentation that came with your Codan modems for more information.

### 2.3.10 Com Port.

Set the serial port your modem is connected to. If you are connecting with a USB / Serial Adapter and the adapter is not plugged in, the port will not be listed. If you know the port number you can type it in, otherwise continue with the installation and after the USB adapter has been installed and is active you will be able to come back to this screen and set the port.

Note that some USB / Serial adapters do not support use with modems even though they work fine with other devices. For a recommendation of adapters that work, contact UUPlus.

Normally there is no need to go into [**Advanced Modem Settings**] unless you are having problems with modem configuration or the connection to the server. For details, see the sections on Modems later on in this manual.

Click [**Done Editing Modem**] to continue.

### 2.3.11 Location Settings.

The Location Settings on the Calling tab will now be displayed. Everything should be set correctly so click [**Next**] to continue. For more information see section 5.0 later on in this manual.

## 2.4 Installation Complete.

You are now finished entering the basic information for UUPlus Personal.

If you selected to set up a **New** UUPlus account, you will be prompted for the information needed to create the account, follow the instructions on the screen.

If you selected **Existing** account or the **Pro** install, you can click the [**Call**] button and try connecting (be sure your modem is connected and on), however, you may want to click [**Setup**] and look over the options not covered in the installation section of this manual and get more familiar with UUPlus Personal features and options. Look over each of the tabs to get to know the features and settings. Most of these are at least some what self explanatory and there is pop-up help available by selecting a field and pressing <F1>.

If you will be calling from more than one location you can set these up on the **Calling** tab. If you will be using more than one modem type you can install more modems on the **Modems** tab.

Note that if you are connecting via MPDS, M4, B GAN, a local ISP dial-up, or connecting to a dedicated cell phone Internet access number, you will need to go to the Calling tab and be sure the Dial-up Networking settings are correct.

For a detailed explanation of all the settings, see the sections below.

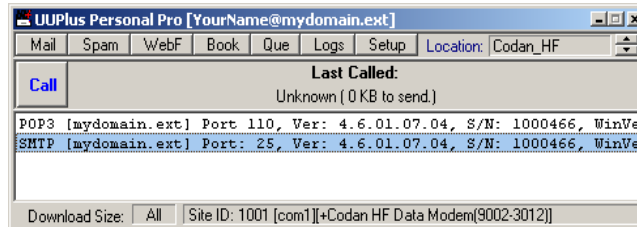
- **Hint:** UUPlus uses the mouse “**right-click**” menu feature in a lot of places for short cuts and feature/settings selection.
- **Hint:** UUPlus doesn't include a lot of menus and fancy Icons, including ones for basic operations such as undo-do, cut, copy, and paste. You can use the Window **short-cut keys** for these operations:

undo <ctrl-z>    cut <ctrl-x>    copy <ctrl-c>    paste <ctrl-v>

## UUPlus Personal User Guide

### 3.0 UUPlus Personal Console.

The UUPlus Personal console window provides access to all the functions of UUPlus Personal. The top button bar includes the a configurable set of buttons along with the location selector if you have more than one location configured. Below the button bar is the Call button and status display, and optionally a log display. The display is configurable and all options are visible by default. The following screen shot shows all options displayed. If you have entered a software key and are connecting to a private network, the window title bar will display “UUPlus Personal Pro”.



[Personal Console]

The following shows the Personal console without the log screen and as a single button bar. You can set the look of UUPlus Personal to suite your needs, but you should leave the log displayed until you are happy that the connections to the server are working as expected.



[Personal Console, alternate view settings]

#### 3.1 [Mail] Button.

Clicking the Mail button will bring up the UUPlus console mailer. This mailer is provided for your convince, it is not intended to be a full-featured mailer, but it will get you by if you have trouble configuring other mailers or your needs are simple.

If there are new or unread messages the Mail button will be in **bold** text.

#### 3.2 [Spam] Button.

UUPlus Personal includes an optional "Ok-List", or a white list of addresses permitted to send mail to you. Information about messages from addresses not in your Ok-List are send in a specialized email and this information can be viewed and wanted messages requested by clicking the **[Spam]** button. Note that if you have any messages from unknown addresses the Spam button will be in **bold** text, otherwise it will be in plain text.

This button will be hidden if the Ok-List is not in use.

#### 3.3 [WebF] Button.

UUPlus Personal includes the capability of fetching (requesting) Web files through the UUPlus server. Clicking the **[WebF]** button will bring up the Web Fetch Viewer and Configuration window.

#### 3.4 [Book] Button.

UUPlus Personal includes a very simple email address book. Clicking the **[Book]** button will bring up the UUPlus Address Book window.

#### 3.5 [Que] Button.

Clicking the **[Que]** button will bring up the outbound message queue (messages to be sent) for the UUPlus server.

#### 3.6 [Logs] Button.

Clicking the **[Logs]** button will bring up the UUPlus Log viewer. The log viewer lists the complete logs detailing all the actions of UUPlus.

### 3.7 [Setup] Button.

Clicking the [Setup] button will bring up UUPlus Personal Setup.

### 3.8 Locations.

Hovering the mouse over the "Locations" label will reveal a button. This is a short cut to the Calling tab in Setup where you configure your locations settings.

If you have more than one location set up, click the Up / Down arrow buttons to change your currently selected location.

### 3.9 [Call] Button.

Invokes a call to the server using the currently selected location settings.

### 3.10 Pop-up Menus

Right-clicking on the console will bring up a menu with a number of options and functions. Here is what they do:

- **Reset.** Restarts all processes. When you change settings in Setup, Personal restarts. If you wish to force a complete restart, click Reset.
- **Debug Mode.** Sets verbose logging mode for trouble shooting. Due to the size of the logs you do not want to normally run in debug modem.
- **Auto Reply.** UUPlus Personal includes an Out-of-Office Reply feature. Clicking this option brings up the Out-of-Office Reply settings screen.
- **Edit Kill List.** This is a short cut to the [Inbound Mail Filter] button on the Limits/Filters tab in Setup.
- **Edit Trusted Addresses.** This is a short cut to the [Trusted Addresses] button on the Limits/Filters tab in Setup.
- **Help.** Context sensitive help is available by pressing <F1> for most options.
- **View User Manual.** Brings up this manual in PDF format. Pressing <F2> will also display the manual
- **Interactive Screen Setup.** Brings up the Interactive connect display in off-line mode with sample message display to allow for size and setting adjustment without having to pay for a connection.
- **Dialer Command Mode.** Displays the UUPlus dialer in command mode for debugging a modem init string.
- **Button Display.** The various buttons in the top button bar can be displayed or not, depending on what features you need. Check or un-check each option as needed. If a button is hidden there will be a right-click menu option for the button feature.
- **Display Button Bar Only.** Displays the console as a single row of buttons for those who like a minimal display.
- **Display Log.** Toggles the console log display on and off.
- **Clear Log on Call.** Clears the log display before a call to make the display less confusing.
- **Close to Tray.** When checked, clicking the [X] in the upper right-hand corner of the console window closes to the tray rather than exiting, leaving Personal running in memory. This prevents the inadvertent shutdown of the mail server.
- **About UUPlus.** Displays the version and build date.
- **Exit UUPlus.** Use this to exit when Close to Tray is checked.

### 3.11 Checking your Mail.

To view mail you can use the UUPlus Console Mailer or any POP3/SMTP capable mailer, such as Outlook, Outlook Express, Lotus Notes, Eudora, Netscape, Thunderbird, Pegasus Mail, etc.

To use UUPlus' console mailer, simply click the **[Mail]** button. You will be presented with a setup screen, set your preferences and you are ready to send and receive mail.

As easy as that was, you will probably want a bit more capable mailer, so see Chapter 10 for how to set them up.

### 3.12 Making a call.

Making a call with UUPlus is very simple. Make sure your satellite phone is on, has signal, and is connected to the computer, then click the **[Call]** button. UUPlus will dial, send and receive your messages, and hang up the connection. You can now read any messages with the console mailer or transfer them to your preferred mailer by clicking the Send/Receive (or Check Mail) button in your mailer.

### 3.13 How UUPlus Works. (short version)

Normally when you check your mail in a mailer, several protocols called "POP", SMTP, and TCP/IP are used. These protocols work great over fast networks and reasonably fast dial-up lines, but are intolerably slow over a 2.4 or 9.6 satellite connection, poor phone lines, or even cell phones. This is due to inherent nature of "IP" (Internet Protocol), which was designed for high speed, error free networks with a very short "round trip time". Since satellite calls are very slow with a very long round trip time, IP just doesn't work very well. The accelerators designed for satellite phones are of some help, but are still subject to the timeouts associated with IP over high latency connections.

To overcome this, UUPlus developed a transfer protocol designed for slow and/or poor connections, and uses a "proxy" mail server on your computer (UUPlus Personal software) to interact with your mailer. When you send and receive in your mailer, it is interacting with the POP and SMTP mail servers UUPlus is running on your computer rather than a mail server on a remote server across a network.

When you click the call button in UUPlus Personal Pro, a connection is made to the remote mail server and your mail is sent and received over the connection you have UUPlus configured to use.

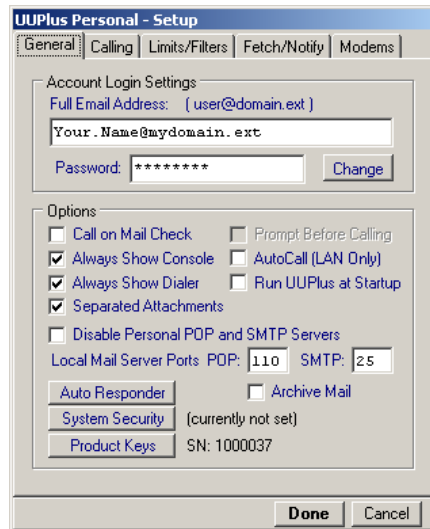
### 3.14 Using UUPlus with your Mailer.

To send and receive messages, the sequence of events is something like this:

1. Start both UUPlus and your mailer.
2. Compose one or more messages in your mailer if you need to send any messages. Depending on the settings in your mailer these are sent immediately or you may need to click the Send/Receive (or Check Mail) button.
3. With the modem or satellite phone on and connected to your computer, click the **[Call]** button on the UUPlus console. The dialer will display and you can watch its progress.
4. When the call is complete, click the Send/Receive (or Check Mail) button in your mailer to move your new mail into the Inbox of your mailer.
5. Repeat the process if you wish to reply to any of the new messages.

## 4.0 Setup - General Tab

The General Settings tab contains the basic information about your site, display options, mail server, and security options.



[Setup General Tab]

### 4.1 Full Email Address.

The Full Email Address field will always be your account (user) name followed by a “@” sign and your domain name. Note that email addresses are not case sensitive.

Examples:      Your.Name@mydomain.ext  
                  yname@subdomain.mydomain.ext

Note that the portion of the address between the “@” and the first dot after the the “@” be must match the “User Host Name” field found on the Misc tab of the server you are connecting to. In the first example above this would be “mydomain” and in the second example it would be “subdomain”. This portion of the address string is used as the host name in the second phase of a login.

### 4.2 Password.

This password is used to connect to the server and also in your mailer when you POP your mail. If you need to view your password in plain text, double-click on the blue “Password:” label.

Example:      letmein

### 4.3 [Change] Button.

If the server you connect to permits Remote User Administration, UUPlus Personal allows you to remotely administer your password. To change your password on the remote server you must first know what it is now and it should already be entered in the Password field. Click the [Change] button, enter the new password in the field provided, and then call the server to effect the change.

Note that if the change was successful your password will be changed locally after the call, so do not change the text in the Password field.

You will also need to change the password in your mailer.

### 4.4 Call on Mail Check.

UUPlus can automatically invoke a call when you POP your mail in your mailer. Check this option to enable this feature. You will be prompted before the call unless “Prompt Before Calling” is unchecked.

Note that it is not recommended to use this feature unless you are using UUPlus VPN over a full time connection. With mobile satellite phones, HF modems, or anytime a connection will last longer than the mail server timeout set in your mailer (usually 30 seconds, configurable up to 5 minutes) your mailer will display an error if it times out before the call is finished. In these cases you should use the [Call] button in the Personal console window.

### **4.5 Prompt Before Calling.**

When checked you will be prompted before a POP invoked call. This option is disabled when Call on Mail Check is not checked.

### **4.6 Always Show Console.**

If Always Show Console is checked, the Personal console will normally be displayed on the screen with an icon in the System Tray. If not checked, the console will be hidden until you click on the UUPlus icon in the System Tray (bottom right, by the clock).

### **4.7 Always Show Dialer.**

If Always Show Dialer is checked, the dialer will be displayed when calling. Note that when calling over a satellite phone, land line modem, or HF modem the dialer is always displayed, so un-checking this option will only hide a VPN connection.

### **4.8 AutoCall (LAN Only).**

If you have a non-interactive location configured that connects over a full time network (LAN) using UUPlus VPN, you can have Personal automatically call when there is outbound mail. To enable this feature the location must include "LAN" in its description, such as: "VPN.LAN". Auto Calling is disabled if the currently selected location uses a dial-up or satellite connection.

### **4.9 Run UUPlus at Startup.**

Click to load UUPlus Personal when the computer is booted and logged into. If you use your computer primarily for email this is highly recommended.

### **4.10 Separated Attachments.**

By default, UUPlus separates attachments from their host message to obtain better compression, thereby decreasing connection time.

If overall connect time is not that important and your connection to the server is unstable (high number of call failures), you might want to un-check this option so attachments arrive during the same call as the message they were removed from.

Certain message types, such as eFax and some weather maps, are not supported by UUPlus' MIME processor, and are not re-assembled in a readable format when they arrive in UUPlus Personal. If you are experiencing this problem, un-check this option.

### **4.11 Disable Personal POP and SMTP Servers.**

If you are using UUPlus' console mailer or Pegasus Mail in User Defined Gateway mode, check this option to turn off UUPlus' internal POP and SMTP servers.

### **4.12 Local Mail Server Ports.**

UUPlus allows you the flexibility to change the IP port numbers from the standard POP and SMTP ports of 110 and 25 respectively. If you are having trouble with a email virus scanner blocking the flow of mail from Personal to your mailer, try changing the settings to ports 109 and 24 for POP and SMTP respectively. You will also need to change the corresponding settings in your mailer.

### **4.13 [Auto Responder] Button.**

Click this button to display the Out-of-Office configuration window. See the section on "Out of Office" messages later on in this manual for more information.

### 4.14 [System Security] Button.

Click the **[System Security]** button to enable. By default, UUPlus stores its configuration files and mail box data in clear text files. This makes for easy troubleshooting, but may not be suitable for your situation. File Security should be used if access to mail needs to be password protected and encrypted. If you enable this option you will be prompted for your password every time you start UUPlus.

Once file security is enabled, disabling or changing the encryption pass-phrase may result in the loss of configuration files and mail, so set this once and leave it.

### 4.15 [Product Keys].

Click to change UUPlus product keys or import a new one from a file. Your serial number is displayed to the right of the button.

### 4.16 [Enable Remote Admin] Button.

If the server you connect to permits Remote User Administration you will never see this button.

If the server you connect to does not permit Remote User Administration and you try to change your settings on the server, the server will send a message that disables the Remote User Administration features on your computer and the **[Enable Remote Admin]** will be visible to the right of the Separated Attachments check box.

If the administrator later enables Remote User Administration on the server it is not automatically enabled on the remote clients. To re-enable Remote User Administration, click the **[Enable Remote Admin]** button. Note that if the server has not enabled Remote User Administration these features will be turned off again if you try to change any of your remote settings.

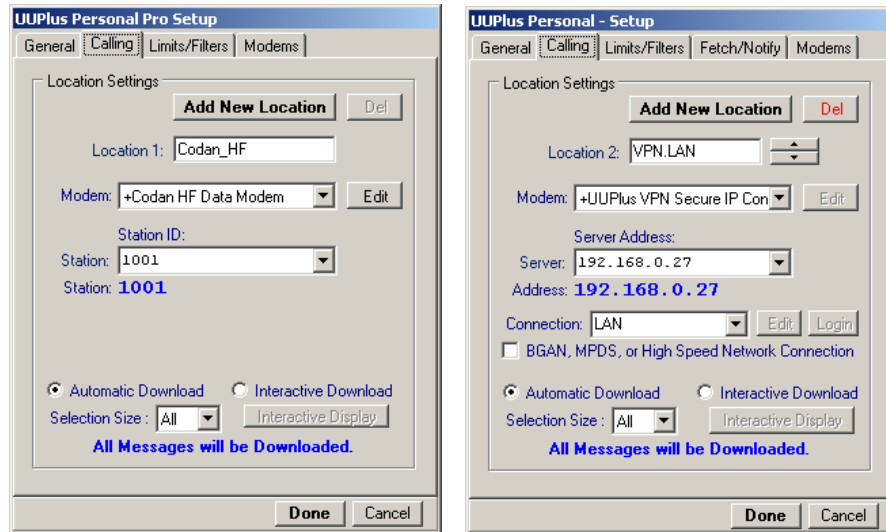
### 4.17 Right-Click Menu.

Right-clicking on the Setup window will bring up the following options:

- **Help <F1>**. Displays context sensitive help for the selected item.
- **User Guide <F2>**. Displays this user guide in Adobe Acrobat.
- **Show Fly-up Help**. Toggles fly-up help on and off.

## 5.0 Setup - Calling Tab.

UUPlus Personal can be configured to use several different modems or connection types based on available services at your current location. For instance, you might normally connect over a land line but have a HF modem for backup when the land line doesn't work, or you might be a mobile user and use a combination of one or more satellite phones, GSM phone, and a network connection (UUPlus VPN) to connect to the server.



[Setup Calling Tab, HF Modem and UUPlus VPN Settings]

To select a location, use the up and down arrow button. If you only have one location, the up/down arrow button is hidden.

### 5.1 Adding a Location.

To add a new location, click the **[Add New Location]** button. All of the current settings will be used for the new location except the display name, which you enter a new one. Once the new name is entered, click **[Save Changes]**, then set the modem, number, connection (for VPN), download, and size options.

If you need to add a new modem for a new location, add the new modem on the Modems tab and that will create a new location on the Calling tab.

### 5.2 Delete a Location.

To delete the selected location, click the **[Del]** button.

### 5.3 Location 'n'.

This is the display name of the currently selected location where 'n' is the number of the location in the location list (the number is meaningless to the software but helpful to you to avoid confusion if you have several locations that are only slightly different in their settings). To edit the display name, simply begin typing. Note that space characters will be changed to a dot (.).

If you hover the mouse over the Location label a button is revealed. Clicking this button will bring up the Locations list in a text editor. Use this feature if you wish to manually edit the locations list. Closing the edit window will save all the settings and exit Setup.

### 5.4 Modem.

The modem to use for this location. Modems are added to this list in the Modems tab, see the section on adding modem later on in this manual for instruction for adding modems.

To edit the selected modem's settings, click the **[Edit]** button to the right of the modem field. For information on modem settings, see the modems section later on in this manual. This button is

hidden when UUPlus VPN is selected.

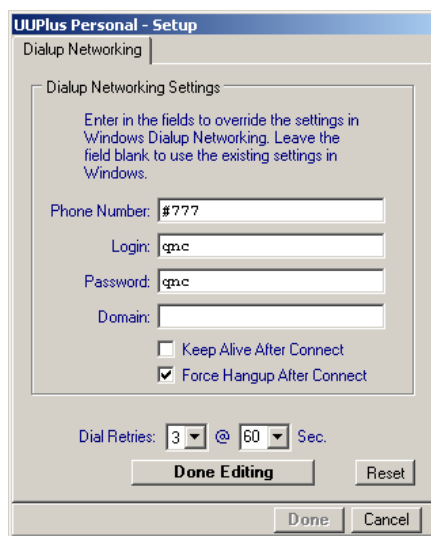
### 5.5 Number / Server.

If a HF modem is selected, this will be the server's station ID, if UUPlus VPN is selected, this will be the server IP address, otherwise it will be the phone number to dial.

To edit the current number or enter alternate numbers, simply type them in. To delete a number from the drop-down list, select it and press <ctrl><del>, then select the number to use and click [Save].

### 5.6 Connection.

When you connect using UUPlus VPN, a Windows' Dial-up Networking Connections list is visible. By default "LAN" is selected. To use a Dial-up Networking entry, select the entry in the Connections list. An [Edit] button is provided for easy access to the Windows DUN settings, a [Login] button is provided to control the phone number, login, password, and hang-up options.



[Dial-up Networking Settings]

- **Phone Number.** Enter the complete phone number to dial. UUPlus uses this number rather than the number settings in Windows. Leave blank to use the Windows setting.
- **Login.** Enter the login (account name) for the account. UUPlus uses this string rather than the login setting in Windows. Leave blank to use the Windows setting.
- **Password.** Enter the password used to log in with. UUPlus uses this string rather than the password setting in Windows. Leave blank to use the Windows setting.
- **Domain.** Enter the Windows domain to use or leave blank for none. UUPlus uses this string rather than the login setting in Windows. Leave blank to use the Windows setting.
- **Keep Alive After Connect.** If checked, the connection will be left up for other processes to use.
- **Force Hangup After Connect.** If checked, the connection will be closed after the connect, regardless of the state before the connection.

### 5.7 BGAN, MPDS, or High Speed Connection.

If you are connecting over a LAN or other high speed connection such as ISDN, DSL, or MPDS equipment, check this option. This can speed up transfers and/or reduce costs when using connections of 64kbps or higher.

### 5.8 Download Settings.

UUPlus Personal features very flexible automatic and interactive download options based on message size and interactive preference.

#### 5.8.1 Automatic Download.

To automatically download all messages check Automatic Download and set Selection Size to "All".

To automatically download messages smaller than a preset size, set Selection Size to the desired size limit in the range of 5k to 250k. When you connect, messages and attachments smaller than the set size will be downloaded, larger messages and attachments will be left on the server for later download using a higher bandwidth connection.

#### 5.8.2 Interactive Download.

When Interactive Download is selected you have the option of choosing the messages and attachments you wish to download. You can opt to have all messages selectable or automatically download messages and attachments under the set size and select messages and attachments over that size.

It is not recommended to use the Interactive Download with a selection size of "All" on a mobile satellite phone or other expensive connection as this will significantly increase connection time as messages are sent one at a time when selected, greatly reducing the compression ratio due to many small files being sent rather than larger "batch" files.

If you use the full Interactive mode to weed out "spam", it will probably cost you more in connect time than it will to just download the junk mail. UUPlus provides filters for junk mail, these are recommended over a full interactive connection. A selection size setting of 25k is recommended for satellite phones, this might be a good choice for HF connections as well.

If you are using a local dial-up or full-time connection the full interactive mode works very well.

For more information on using the Interactive Download feature see the section later on in this manual.

## 6.0 Setup – Limits / Filters tab.

UUPlus Personal supports user configuration of message size limit, message forwarding, and several message filtering options. Note that some of these feature are only available if the server you connect to permits remote user configuration.



[Setup Limits/Filters]

### 6.1 Max Inbound Message Size Limit.

Sets the maximum message size you wish to download. The size you set will be sent to the server the next time you connect. Setting this to “no limit” turns off message size restriction.

Oversized messages will either be returned to the sender with a message explaining why or forwarded to the address specified in the “Forward Messages To” field.

### 6.2 Forward Messages To:

The address to forward either “oversized”, or “all” messages to. Be sure you enter a valid address that does not have any size restriction, and make sure this address is not one you fetch or have forwarded to you, or an endless loop will be created.

If “Max Inbound Message Size Limit” is other than “no limit”, messages larger than the specified size are forwarded to the specified address.

If “Forward ALL Msgs” is checked, all messages will be forwarded to the specified address.

### 6.3 Forward ALL Msgs.

If checked, all messages will be forwarded to the address specified in the “Forward Messages To” field.

### 6.4 Prompt Before Sending Messages Larger than:

Most mailers don't offer any information as to how large a message is when you are sending outbound mail. Since UUPlus Personal is most often used over expensive or slow connections, you can have Personal prompt you about large messages so you have some idea of what it's going to cost or the time it will take. Set the value in this field to what seems appropriate for your needs.

Note that when you send a message over the set size you will be given the choice to send it anyway or not send the message.

### 6.5 [Trusted Addresses].

If you have a size limit set you can enter addresses that are exempt from the size limit. This list is sent to the server and if you have a size limit set, this list is checked, and if a match is

found the message will be permitted regardless of size.

This is a “partial string” search, so you can list all addresses at a domain or individual addresses, one per line. Examples:

```
@uuplus.com  
yourboss@your.domain.ext
```

### 6.6 [Inbound Mail Filter].

The Inbound Mail Filter is a list of text strings the server searches for in the message header of mail received at the server for you. Message subject and sender fields are searched, and if a match is found the message is deleted at the server.

Note that the search is a “partial string”, case insensitive search, which means that you should be careful what you include in this list, as an “@” or a “.” on a line by itself will delete all your inbound mail. Each string should be on a separate line:

```
Adv:  
@b2blists.com  
eat pizza and loose weight  
Grow Rich
```

Note also if the string is too specific it won't do much good either.

If you are using UUPlus' mailer you can add to this list from the mailer, or paste into the list using Window's Clipboard and <ctrl – v>. There is also a short cut to the list by right-clicking on the Personal console.

### 6.7 [Internal Attachments].

By default, UUPlus separates attachment files from the message body for transfer, however, some types of attachments are not encoded by some mailers or automated mail software before being placed in the message body. If this is the case, UUPlus may render the attached file unreadable. To eliminate this problem, list the file extensions for the types of files you wish to keep internal. There are a number of file types already listed in the default file

### 6.8 Use Ok-List.

The Ok-List is a "white list" used for spam filtering. If this option is checked, the server will keep track of each address you send mail to and allow mail from those addresses through, but hold messages from unknown addresses. Information about mail from unlisted addresses is available by clicking the [**Spam**] button on the UUPlus Personal console after each call.

### 6.9 Minimize Msg. Size.

Removes unnecessary HTML formatting and message header information before transfer. Formated messages will be reduced in size an average of 50%. Messages with attachments are left as is.

Note that some messages sent in HTML (formatted) only format may loose some paragraph formatting and may be more difficult to read.

### 6.10 Name.

This is your "full name" field, usually you just use your first and last name.

Example:        John Doe

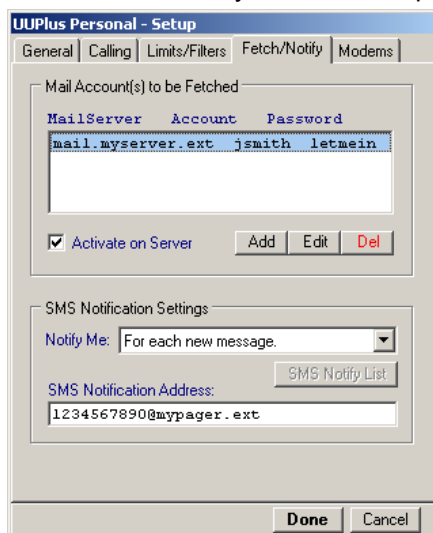
### 6.11 Local Time Zone:

This is the offset to GMT of your location. It is used in the date field in mail headers.

Example:        +0100

## 7.0 Setup - Fetch/Notify tab.

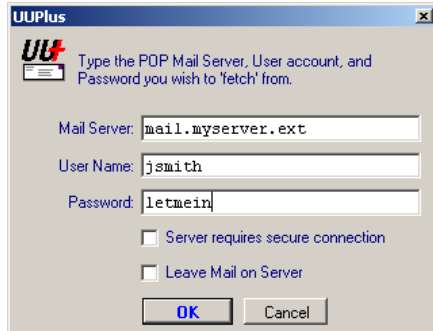
UUPlus includes the ability to fetch up to 4 accounts and SMS notification when mail arrives. Note that these features are only available if the server you connect to permits remote user configuration.



[Setup Fetch/Notify]

## 7.1 Fetching.

UUPlus Personal provides the capability to fetch up to 4 remote accounts if the server you connect to permits, or has the ability to fetch a remote email account. To add a fetch, click the **[Add]** button.



[Setup Edit Fetch Entry]

- **Mail Server.** Enter the mail server the account is hosted on. Note that not all mail servers and accounts are Internet accessible, so there is the possibility that you will not be able to fetch the account.
- **User Name.** Enter the account name or login for the account.
- **Password.** Enter the password for the account.
- **Server Requires Secure Connection.** Uses the default SSL 995 port. Check if needed.
- **Leave Mail on Server.** Check if needed. Note that when you again connect directly to this server you will get all your mail again, so this might not be a good thing.

Use the **Active** check box to enable/disable fetching of your account(s) on the UUPlus Server. This will activate/deactivate the fetching without having to edit the entry.

Select an entry to **edit** or **delete** it.

You must call the UUPlus server for any changes to take effect.

### 7.2 SMS Notification.

UUPlus Personal provides the capability of SMS Notification to your mobile phone or pager when you receive messages. This only works with service providers who support SMS by email.

To configure SMS Notify, enter the email address in the **SMS Notification Address** field. This is usually your satellite phone number followed by an "@", followed by the domain of the service provider.

Example: 1234567890@msg.iridium.com

Next, in the **Notify Me:** field, select the criteria for sending a notification. This can be never, for each new message, when you received a message from an address listed in the SMS Notify List, or based on the size of the mailbox.

If you select to be notified by a list match, be sure to enter the addresses in the **SMS Notify List**. This is a "partial string" search, so you can list all addresses at a domain or individual addresses, one per line. Examples:

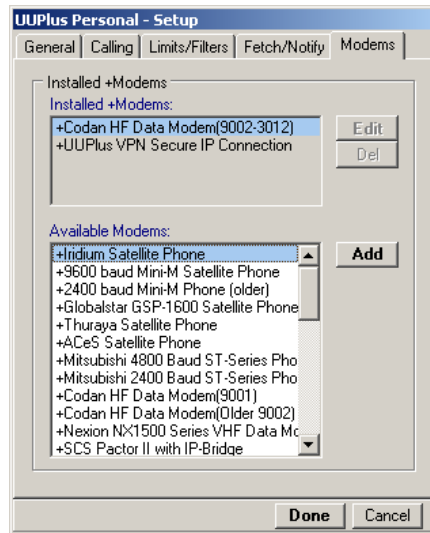
```
@uuplus.com  
yourboss@your.domain.ext
```

You must call the UUPlus server for any changes to take effect.

## 8.0 Setup - Modems Tab

UUPlus Personal supports any modem that uses the AT command set, including most land line modems, data capable cell phones, satellite phones, HF modems, and UUPlus VPN for use over a LAN, local and cell phone dial-up service, as well as MPDS systems (M4) and BGAN connections.

There are two ways to access and configure modems in UUPlus: use a modem installed in Windows' Control Panel, or have UUPlus directly configure and handle the modem. Our experience has shown that you should only use a Windows' configured modem if the modem requires a software driver or as a last resort. On some computers Window's installed modems have a bad habit of hanging up right when the remote picks up and then report this as a "normal hangup by remote" when in fact the two modem's are trying to sync (the screech you hear when the other side picks up). This varies from computer to computer and happens most often with Internal modems on laptops.



[Setup Modems Tab]

### 8.1 Edit Button.

To edit an installed modem, select it in the Installed +Modems list and click [**Edit**].

### 8.2 Del Button.

If you wish to un-install a modem, select it in the Installed +Modems list and click [**Del**]. Note that you will be able to re-install this modem later if needed.

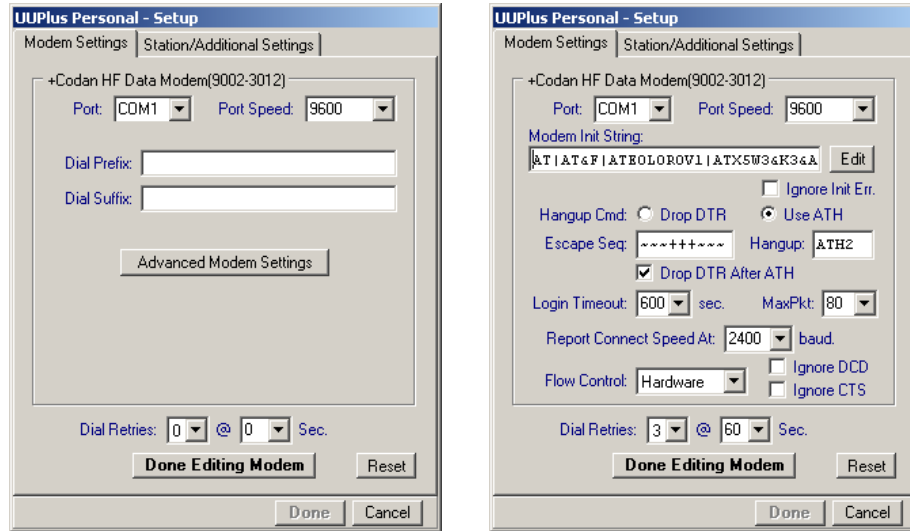
### 8.3 Add Button.

To "install" a UUPlus configured modem, select it in the Available Modems list and click [**Add**]. When a modem is selected, UUPlus automatically selects the best settings for each modem type. This includes the port speed and all the settings in the modem edit screen.

UUPlus highly recommends using a UUPlus configured modem. If your modem is not listed, use the +Default Modem. Using a Windows installed modem (a TAPI modem) may result in an inability to call or may result in a higher than average disconnect rate. By the way, did I mention you should avoid using Windows installed modems?

## 8.4 Modem Settings.

For UUPlus configured modems there will be the following screen, for UUPlus VPN and Windows configured modems there will not. Note that with the exception of the Port, these settings should not need changing.



[Setup Modem Settings Tab]

### 8.4.1 Port.

Select the Port the modem is on. Only active serial ports are listed. If the correct port is not listed you can type it in.

If you are connecting with a USB / Serial adapter, and the adapter is not plugged in, the port will not be listed. To list the port, exit setup, plug the USB adapter in, and re-enter Setup. The USP port should now be listed. If it is not, you may have to reboot your computer to get it to recognize the USB adapter, or you may need to install/reinstall the adapter.

Note that some USB / Serial adapters apparently do not support use with modems. For a recommendation of adapters that work, contact UUPlus.

### 8.4.2 Port Speed.

This is the speed that the computer communicates to the modem. This pre-set for each modem type and should not normally need to be changed. Note that many satellite phones only support one port speed, if you change this your phone may not work.

### 8.4.3 Dial Prefix.

Enter any characters to send to this modem before dialing the number. This might be a outside line access number, long distance access number, or whatever is needed. Commas can be be use for a one second delay each.

### 8.4.4 Dial Suffix.

Enter any characters to send to this modem after dialing the number. This might be a pound symbol or whatever is needed. Commas can be be use for a one second delay each.

Click the [**Advanced Modem Settings**] button to access the following options:

### **8.4.5 Modem Init String:**

The AT initialization string to initialize the modem.

### **8.4.6 Speaker.**

Sets the modem speaker on or off. This has no effect on a modem with no speaker.

### **8.4.7 Ignore Init Error:**

Check this box this box if an initialization error occurs and you wish to ignore the error. You may need to do this if you are running Win2000 Pro on a Dell laptop and are using an Iridium phone.

### **8.4.8 Hangup Cmd:**

The command to go on-hook. Select either **Drop DTR** or **Use ATH**.

### **8.4.9 Hangup String:**

The string to send to the modem to go to command mode to hang up the modem.

### **8.4.10 Login Timeout:**

The amount of time to wait for a connect.

### **8.4.11 Max Pkt:**

The maximum number of unacknowledged packets that can be sent. Normally this should be set at 80.

### **8.4.12 Report Connect Speed At:**

Sets what to report the connect speed as. The connect speed is used to determine packet size and some modems report the **port** speed, not the **connect** speed in the CONNECT message. For instance, if a 9600 baud satellite phone reports the connect speed at 38400, the packet size will be set at 1024 rather than 256, which is way to large for the actual baud rate of the connection. This setting allows you to set an appropriate value to report so that packets are sized for the actual baud rate.

### **8.4.13 Flow Control:**

Determines if CTS is controlled by the hardware or software. Most modems use hardware flow control.

### **8.4.14 Ignore DCD:**

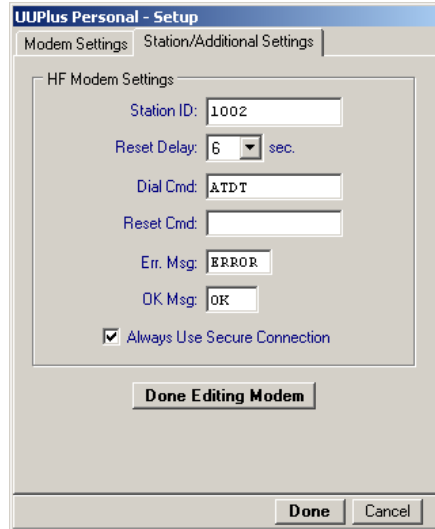
Some modems or USB to Serial adapters do not report DCD high once modem sync occurs, thus when UUPlus enters the protocol phase and begins DCD checking it will erroneously report that carrier is lost. Check this box to ignore carrier detect.

### **8.4.15 Ignore CTS:**

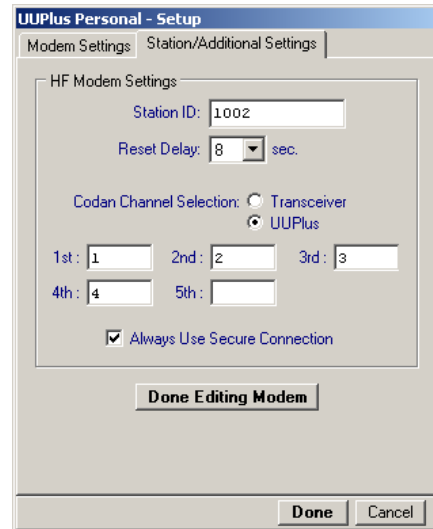
Check this box to ignore Clear to Send. CTS is used by the modem to inform the computer and the remote modem it can send data. When the modem buffers are full, the modem drops CTS indicating that the remote and the computer should not send any more data until CTS is raised. Some modems (notably cell phones) do not have the CTS feature, so the modems will connect and login, but stall in the protocol phase because they never raised CTS. If this is the case, check this option.

## 8.5 HF Modems.

UUPlus supports Codan 9001, 9002, and 3012 HF modems, as well as the SCS PCT-II modems with the Pactor III and AT command upgrade. If you are configuring a HF modem, the Station/Additional Settings tab will be visible.



[Setup, Additional Settings Tab, SCS Selected]



[Setup, Additional Settings Tab, Codan Selected]

### 8.5.1 Station ID (call sign).

The Station ID or call sign for your HF station. If you do not set a station ID, the Codan modems get very fussy and the SCS modems will give you a error and refuse to call. Codan modems should not have a station ID that ends in "00", as these are reserved.

For newer NGT Codan equipment, you are allowed up to a 6 digit address. In older equipment, you are allowed up to a 4 digit address. For SCS modems, consult the documentation that came with your modem for more information.

### 8.5.2 Reset Delay.

This is the time allowed after a call before resetting the modem. For call only stations 6 to 8 seconds if fine.

### 8.5.3 Dial Cmd.

Allows for a custom dial command. Normally this should not be needed.

### 8.5.4 Reset Cmd.

Allows for a custom reset command. Normally the default should be used. Note that for SCS modems the field should be blank.

### 8.5.5 Err. Msg.

Allows for a custom error response. Normally this should not be needed.

### 8.5.6 OK Msg.

Allows for a custom OK response. Normally this should not be needed.

### 8.5.7 Always Use Secure Connection.

By default, UUPlus transfers data using encrypted files. If you need to turn this feature off for transfers over amateur radio frequencies, un-check this option.

### 8.5.8 Codan Channel Selection.

This is only available for Codan modems. If the HF channel is controlled by the transceiver,

than the radio determines what channel to call on.

If the HF channel is controlled by UUPlus, then the channels are tried in the order listed. The channels listed here must match ones configured in the NGT transceiver.

### 8.6 Internal Modems.

Internal modems, especially the ones in laptops, can be of dubious quality or they can be really good. We've seen good modems in cheap laptops and lousy modems in expensive laptops.

Regardless of quality, Windows always configures internal modems, and as mentioned elsewhere in this manual, sometimes connections using UUPlus and Windows' (TAPI) configured modems are not very happy.

To improve performance and reliability, you can usually configure these modems using the +Default Modem set to COM3 and a port speed of 38400 (no need to go higher, it won't help and it could make things worse). Most internal modems should work with the default settings for +Default Modem type. You may need to use a port other than COM3, but COM3 is the most common.

### 8.7 Cell Phones and PMICA Modems.

Read the above section on internal modems and try the same settings for your cell phone, ACeS phone, and other PMICA based phones and modems. It may get you around the "TAPI disconnect" problem.

### 8.8 UUPlus VPN.

UUPlus VPN creates a secure link between the user's computer and the UUPlus server their account is located on over the public Internet or a LAN. This allows the user to connect to the server and securely send and receive their mail just as they would over the satellite phone.

UUPlus VPN uses UUPlus' batching, compression, and error correcting protocol. In addition to being encrypted it can be 4 to 8 times faster than a POP/SMTP session over the same connection, and will often work when POP and SMTP won't.

In field usage, UUPlus VPN has been found to work more reliably than POP/SMTP over the same connection when used with Windows Dial-up networking to a local ISP, over cell phones, or over the poor quality land lines found in many third-world countries, so if you are having problems with POP/SMTP, UUPlus VPN might solve the problem.

UUPlus VPN also works well over Inmarsat M4, as well as any IP based satellite connection. Some full time satellite services charge a flat monthly rate for a given bandwidth and with these services there may be no real cost advantage to using UUPlus VPN, but if you are limited by available bandwidth, UUPlus' compression may help transfer more data than otherwise possible. Other services, such as BGAN and mobile packet data services (MPDS), charge by the Kbyte, so with UUPlus' average 4:1 compression ratio and the further size reduction of sending attachments separately, the software can significantly reduce costs.

UUPlus VPN requests connects on IP port 540 and transfers data on ports 541-549, so any firewall mechanism must be configured to allow this port range. To achieve the robustness of UUPlus VPN, only one connection on a given port is permitted. This is overcome by using the range of ports.

UUPlus VPN connects either over a LAN connection or using Windows Dial-up Networking. To use Dial-up Networking, you must first configure a Dial-up Networking entry in the Windows Control Panel, then select the entry in the Personal Setup Calling tab (see the instructions above).

#### 8.8.1 Configuring UUPlus VPN over a Standard Dial-up Connection.

1. If you have not already configured Windows Dial-up for the local ISP, click on [Start — Settings — Control Panel]. If you have, skip to step 14

2. Open the [Network and Dial-up Connections] folder.
3. Double-click on [Make a New Connection] and click [Next] to begin.
4. Select [Dial-up to the Internet] and click [Next].
5. The Internet Connection Wizard should appear. Select [I want to set up my Internet connection manually...] and click [Next].
6. Select [I connect through a phone line and a modem] and click [Next].
7. Select your internal modem or the modem you will be connecting with and click [Next].
8. Enter the telephone number of the ISP you are connecting to and click [Next]. UUPlus recommends disabling the area code and dialing rules and entering the number manually.
9. Enter the username and password for your local ISP and click [Next].
10. Enter a description for the ISP you are connecting to and click [Next].
11. Select “No” you do not want to set up an Internet mail account and click [Next].
12. Un-check the box to connect to your local ISP immediately and click [Finish].
13. Close the [Network and Dial-up Connection] and [Control Panel] folders.
14. Open UUPlus Personal Pro.
15. Select [Setup] and go to the [Modems] tab.
16. Find “+UUPlus VPN Secure IP Connection” listed in [Available Modems] and click [Add].
17. On the [Modem Settings] tab, check [Use Dial-up Networking] and in the pull-down box, select the ISP you will be connecting to.
18. Enter your [ISP Login] and [Password].
19. Click [Done Editing Modem].
20. On the [Calling] tab, a new location labeled “UU+VPN” should automatically be created.
21. Click [Done].
22. Make sure the [Location] is set to “UU+VPN” and click [Call].

### **8.8.2 Configuring UUPlus VPN over a Full-time Connection.**

1. Open UUPlus Personal Pro.
2. Select [Setup] and go to the [Modems] tab.
3. Find “+UUPlus VPN Secure IP Connection” listed in [Available Modems] and click [Add].
4. On the [Modem Settings] tab, check [Use High Speed Connection Settings] and click [Done Editing Modem].
5. On the [Calling] tab, a new location labeled “UU+VPN” should automatically be created.
6. Click [Done].
7. Make sure the [Location] is set to “UU+VPN” and click [Call].

### **8.9 Iridium 9500 and 9505 Satellite Phones.**

The Iridium network is composed of 66 satellites in a near-polar orbit at an altitude of 485 miles (780 km). They circle the earth once every 100 minutes. At the equator, a satellite takes 7 minutes to travel across from horizon to horizon. This means at least every 7 minutes there will be a hand off between satellites and your connection. They also require a direct view of the satellite. Buildings, foliage, or a sail will block the connection.

Iridium has two handsets, the original 9500 series and the newer 9505 series phone. If the 9500 phone is updated with the latest firmware, there is no advantage in terms of quality of service between the two phones.

The Iridium handset comes with a small omni-directional antenna that requires line of sight to the satellite. This makes the phone unusable indoors or in areas where a large portion of the sky is obstructed. With the standard antenna, the phone might not be able to penetrate a forest canopy. There are several larger antennas you can purchase such as the mast antenna and the car top antenna. These antennas help tremendously with the signal strength, but still require a clear view of the sky.

As each satellite dips towards the horizon, the call from the Iridium handset gets handed off to the next satellite. As you move toward the equator, the satellites move to their farthest point from each other, making the angle to the satellite lower and possibly obstructed by terrain. This increases your chance of no signal or dropped calls. Based on our calls logs, the call drop rate at the equator is about 25%. As the phones moves away from the equator, that percentage drops to as low as 10%.

For data calls, there is no difference between the 9500 and 9505 series phone. Both will work in the same way under similar conditions.

### 8.9.1 Configuring for the Iridium Modem.

1. Open UUPlus Personal and click [Setup] and select the [Modems] tab.
2. Find the "Iridium Satellite Phone" listed in [Available Modems] and click [Add].
3. On the [Modem Settings] tab, check to determine the COM Port is correct and click [Done Editing Modem].
4. On the [Calling] tab, a new location should automatically be created called "Iridium."
5. The [Country Code] should default to "001" and the [Phone Number] should be set to "[auto]." The [Dial String] should read is "001.[auto]." If these settings are different, click [Reset] and the phone numbers will be set to the default settings.
6. Click [Done].
7. Connect your Iridium phone to your computer, check the signal strength, and click [Call].

Some laptops send an extra character to the phone when first calling which may cause an error. If you get the following error:

```
Modem ERROR: [ERROR] Please check modem INIT string.
```

1. Select [Setup] in UUPlus Personal or SOHO and go to the [Modems] tab.
2. Find the "+Iridium Satellite Phone" now listed in [Installed +Modems] and click [Edit].
3. On the [Modem Settings] tab, find and check the "Ignore Init Err" box and click [Done Editing Modem].
4. Click [Done].
5. Click [Call].

### 8.9.2 Configuring using a Generic Windows Modem.

Below are instructions for configuring TAPI modems with UUPlus Personal Pro. We do not recommend using a TAPI modem except as a last resort.

1. Open the Control Panel by [Start — Settings — Control Panel].
2. Open [Phone and Modem Options] and go to the [Modems] tab.
3. If the modem, “Standard 19200 bps Modem” is listed, than skip ahead to step 10.
4. If the modem, “Standard 19200 bps Modem” is not listed, then click [Add].
5. Check “Don’t detect my modem...” and click [Next].
6. Select the “Standard Modem Types” as the [Manufacture] and “Standard 19200 bps Modem” as the Model. Click [Next].
7. Select the appropriate COM Port (usually COM1) and click [Next].
8. Click [Finish].
9. You will be back on the [Modems] tab and the newly added modem should be listed. Click [OK] to exit the [Phone and Modem Options].
10. Open UUPlus Personal Pro.
11. Click [Setup] from the operation window and select the [Calling] tab.
12. Click [Add New Location] and type in “Standard 19200” as the location.
13. From the [Modem] pull-down box, select the “Standard 19200 bps Modem.”
14. Since this is a Windows installed modem, UUPlus Personal assumes it is a regular modem and that you are calling from a U.S. territory. You will need to change the [Country Code] from “1” to “001.” The [Dial String] should read “001.[auto]. If you click the [Reset] button, the software will revert back to the default settings and the call will not be completed.
15. Click [Save Changes] to save the changes to this new location.
16. Click [Done].
17. Click [Call] from the UUPlus operation window.

### **8.9.3 Configuring using the Motorola Satellite Series Data Modem.**

1. Place the Iridium CD in the CDROM.
2. Open the Control Panel by [Start — Settings — Control Panel].
3. Open [Phone and Modem Options] and go to the [Modems] tab.
4. If Motorola Satellite Series Data Modem is listed, skip to step 13.
5. If Motorola Satellite Series Data Modem is not listed, then click [Add].
6. Check “Don’t detect my modems” and click [Next].
7. A list of Manufacturers and models should be listed. Click [Have Disk].
8. Click [Browse]. Select the Iridium CDROM and open the “Dial-up Data” folder. Select the satellite.inf file and click [Open].
9. The path to the CDROM usually appears as (“D:\Dial-UP Data”). Click [OK].
10. Select “Motorola Satellite Series Data Modem” and click [Next].
11. Select the correct COM Port and click [Next].
12. It should read “Your modem has been set up successfully.” Click [Finish] and then [OK].
13. Open UUPlus Personal Pro.

14. Click [Setup] from the UUPlus operation window and select the [Calling] tab.
15. Click [Add New Location] and type in “Motorola” as the location.
16. From the [Modem] pull-down box, select the “Motorola Satellite Series Data Modem.”
17. Since this is a Windows installed modem, UUPlus Personal assumes it is a regular modem and that you are calling from a U.S. territory. You will need to change the [Country Code] from “1” to “001.” The [Dial String] should read “001.[auto].” If you click the [Reset] button, the software will revert back to the default settings and the call will not be completed.
18. Click [Save Changes] to save the changes to this new location.
19. Click [Done].
20. Click [Call] from the UUPlus operation window.

### 8.10 Inmarsat Mini-M Phones.

The Mini-M is a consumer satellite phone service for the Inmarsat system. Companies such as French Telecom, Stratos, and Telenor sell the service. The Inmarsat system operates a constellation of five geostationary satellites that provides a global phone, data, and fax communication.

The Mini-M has a directional antenna, which only needs line of sight to the geostationary satellite. It does not need a large view of unobstructed sky. This means the phone is capable of being operated from within a building from a window or through a hole in the forest canopy.

#### 8.10.1 Configuring a Mini-M Modem.

1. Open UUPlus Personal Pro.
2. Click [Setup] from the operation window and select the [Modems] tab.
3. Find the +9600 baud Mini-M Satellite Phone listed in [Available Modems] and click [Add].
4. On the [Modem Settings] tab, check to determine the COM Port is correct and click [Done Editing Modem].
5. On the [Calling] tab, a new location should automatically be created called “Mini-M.”
6. The [Country Code] should default to “001” and the [Phone Number] should be set to “[auto].” The [Dial String] should read is “001.[auto].” If these settings are different, click [Reset] and the phone numbers will be set to the default settings.
7. Click [Done].
8. Connect your Mini-M phone to your computer, check the signal strength, and click [Call].

If you are unable to make a call with the “+9600 baud Mini-M Satellite Phone” modem init string, try the “+2400 baud Mini-M Satellite Phone.” Some older Mini-M models prefer the 2400 baud settings.

#### 8.10.2 Configuring using a Generic Windows Modem.

1. Open the Control Panel by [Start — Settings — Control Panel].
2. Open [Phone and Modem Options] and go to the [Modems] tab.
3. If the modem, “Standard 9600 bps Modem” is listed, than skip ahead to step 10.
4. If the modem, “Standard 9600 bps Modem” is not listed, then click [Add].
5. Check “Don’t detect my modem...” and click [Next].
6. Select the “Standard Modem Types” as the [Manufacture] and “Standard 9600 bps Modem” as the Model. Click [Next].

7. Select the appropriate COM Port (usually COM1) and click [Next].
8. Click [Finish].
9. You will be back on the [Modems] tab and the newly added modem should be listed. Click [OK] to exit the [Phone and Modem Options].
10. Open UUPlus Personal Pro.
11. Click [Setup] from the operation window and select the [Calling] tab.
12. Click [Add New Location] and type in "Standard 9600" as the location.
13. From the [Modem] pull-down box, select the "Standard 9600 bps Modem."
14. Since this is a Windows installed modem, UUPlus Personal assumes it is a regular modem and that you are calling from a U.S. territory. You will need to change the [Country Code] from "1" to "001." The [Dial String] should read "001.[auto]. If you click the [Reset] button, the software will revert back to the default settings and the call will not be completed.
15. Click [Save Changes] to save the changes to this new location.
16. Click [Done].
17. Click [Call] from the UUPlus operation window.

## 9.0 Using UUPlus Personal.

This section covers the various features included with UUPlus Personal, what they do, and how to use them.

### 9.1 UUPlus Interactive Download.

When Interactive Download is selected for a location you have the option of choosing the messages and attachments you wish to download. You can opt to have all messages selectable or automatically download messages and attachments under the set size and select messages and attachments over that size.

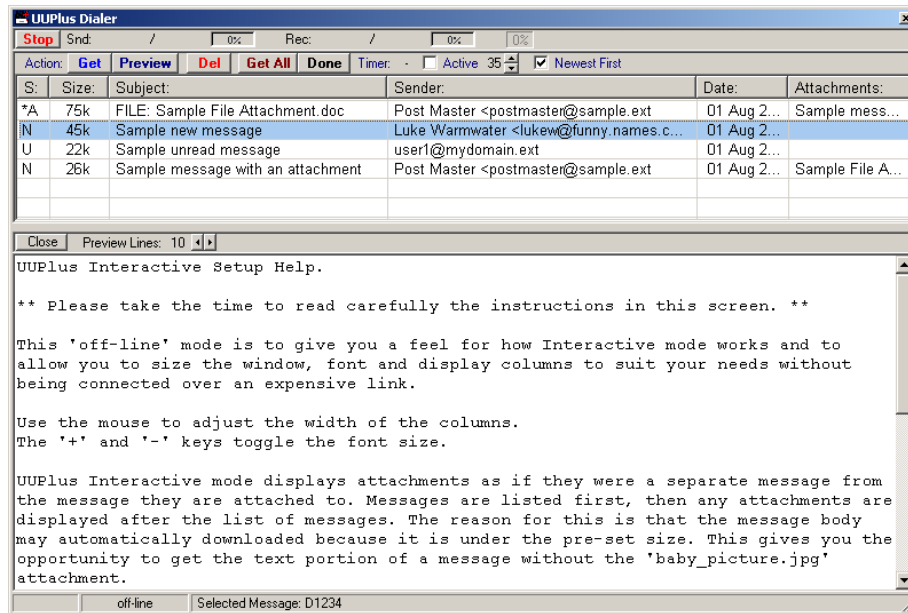
It is not recommended to use the Interactive Download with a selection size of "All" on a mobile satellite phone or other expensive connection as this will significantly increase connection time as messages are sent one at a time when selected, greatly reducing the compression ratio due to many small files transferred rather than larger "batch" files.

If you use the full Interactive mode to weed out "spam", it will probably cost you more in connect time than it will to just download the junk mail. UUPlus provides filters for junk mail, these are recommended over a full interactive connection.

A selection size setting of 25k is recommended for satellite phones, this gives you a good balance between speed and the ability to select larger messages and attachments. 25k will most likely be good for HF connections as well. If you are using a local dial-up or full-time connection the full interactive mode works very well.

#### 9.1.1 Setting Up the Interactive Display.

The Interactive Display can be invoked from the **[Interactive Display]** button on the Calling tab in Setup, or by right-clicking on the Personal console and clicking **Interactive Screen Setup**. Either action brings up the off-line setup mode of the Interactive display.



[Dialer Off-Line Interactive Display]

UUPlus Interactive mode displays attachments as if they were a separate message from the message they are attached to. Messages are listed first, then any attachments are displayed after the list of messages. The reason for this is that the message body may automatically downloaded because it is under the pre-set size. This gives you the opportunity to get the text portion of a message without the 'baby\_picture.jpg' attachment.

The Interactive display has 5 parts.

### 9.1.2 Progress Bar.

The Progress bar contains a [**Stop**] button to manually disconnect from the server, send and receive progress, and a data error display.

Note that in interactive mode sometimes the Receive progress meter gets out of sync with the actual data to be downloaded because of the batching and compression of messages that takes place and the dynamic amount of data expected due to selecting messages. If the receive progress meter shows 100% and the data received keeps climbing, it is a display error only, do not abort the transfer.

### 9.1.3 Action Bar.

The action bar includes 5 buttons to perform actions on a selected message or attachment (item), and a “done” timer display and setting.

The action buttons are enabled or disabled based on if the action is available for the selected item. An item must be selected before any action can be taken on it.

- [**Get**] Downloads the selected item. Note that this action is not reversible, if you “get” an item you can not change your mind and stop it's download. If you need the item removed from your download queue you must contact UUPlus tech support to have the item removed. Messages that are user selected are sent one at a time so transfer time is higher than with automatic download.
- [**Preview**] Allows you to preview the first few lines of a message. The number of lines is configurable. Note that if the message is formatted text you may only see formatting information. It is not recommended that you use this option over a slow connection as the data could take 15 seconds or more to be displayed if there are other messages being downloaded at the time. This button is disabled when an attachment is selected.
- [**Del**] Deletes the selected item. This action is final, there is no “are you sure” prompt and there is no “un-do” button.
- [**Get All**] Selects all items for download and clicks the [**Done**] button.
- [**Done**] When you are done selecting messages, click the [**Done**] button. This tells the program to ignore any un-selected items, finish downloading what you have selected, and hang-up the connection. Unselected items will be displayed each time you call in.
- **Interactive Timer.** To prevent an interactive connection from just sitting there costing you a lot of money if you should get distracted during the call, a timer will close the connection after a period of time. The inactivity time is 20 seconds by default, you can change this value with the Up/Down Arrow button to the right of the timer. You can also deactivate the timer by un-checking  **Active**. The selection time remaining is displayed and is reset each time an item is selected. The time remaining changes color as selection time runs out. When selection time runs out the program presses the [**Done**] button for you, messages already in the queue are downloaded and the connection is closed.
- **Newest First.** Check if you wish the newest message displayed at the top of the list and the oldest message at the bottom of the list.

When an item has been acted on it is removed from the display and is processed in the background.

When all items have been acted on the program presses the [**Done**] button for you, messages already in the queue are downloaded and the connection is closed.

### 9.1.4 Selection Panel.

The message and attachment selection panel displays all items available for download.

Note that if you have attachments sent separately they are displayed separately from their host message. If you automatically select smaller messages for download, the chances are that the host message is already being downloaded and only the attachment is displayed.

You can use the mouse to adjust the width of the columns and the '+' and '-' keys toggle the font size.

The following fields are displayed for each item:

- **S:** The first field is the status of the item. This will be “**N**” for New message, “**U**” for Unread message, and “**\*A**” for an attachment. If items are ignored they will be displayed each time you connect. Note that if the list grows very large it could become time consuming to download, so you will want to keep this trimmed to save time and for easy viewing.
- **Size:** The second field shows the size of the item in K bytes. For attachments this is the compressed size, for messages this is the un-compressed size.
- **Subject / Attached File:** The third field shows the **Subject** if a message is selected and the **File Name** if an attachment is selected.
- **Sender:** The fourth field is the email address of the sender.
- **Date:** The fifth field displays the message date.
- **Attachments / Subject:** The last field displays the attachment list if the item is a message, or the Subject if the item is an attachment.

Note that the Subject and Attachment fields (third and last) switch places depending on if the item selected is an attachment or a message. This keeps the most important information used to decide what to do with an item in the first three columns of the display.

### 9.1.5 Log / Preview Window.

When you Preview a message it will be displayed in the preview window, size this as needed.

You can set the number of message lines to retrieve using the arrow button.

To close the preview window and return to the log window, click the **[Close]** button displayed on the preview panel.

### 9.1.6 Pop-up Menu.

Right-clicking on the Selection Panel will display a menu with the following options:

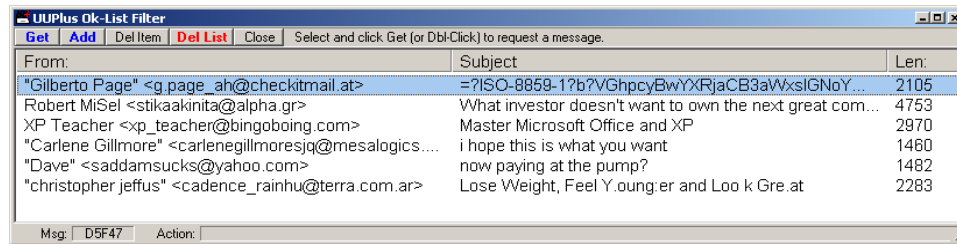
- **Get, Del, Preview, Get All.** These are links to the respective buttons.
- **Dbi-Click: Get.** Sets the default Dbi-Click action to Get the message.
- **Dbi-Click: Preview.** Sets the default Dbi-Click action to Preview the message.
- **Increase / Decrease Font.** Changes the font size in the selection panel.
- **Done.** A link to the Done button.

## 9.2 UUPlus 'Ok-List' Spam Filter.

When the Ok-List is active, clicking the **[Spam]** button in the Personal console brings up the following window. Note that this feature is only available if the server you connect to permits remote user configuration.

Note that the Ok-List is not active by default and the Spam button won't be visible. After activating the Ok-List feature on the Limits/Filters tab of Personal Setup, you then must right-click on the Personal console, click on "Buttons", and check "Ok-List Spam Filter" to display the button.

Note that you can also view the list in the UUPlus console mailer, the button in the Personal console is provided for faster access to the list or if you are using another mailer.



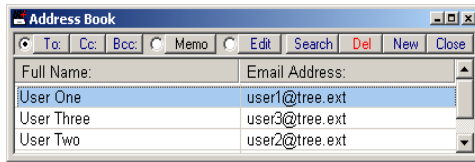
[Ok-List Filter Display]

There are three fields displayed for each message: the sender, the subject, and the message size. You can perform a number of operations on each message:

- **Get.** Get the selected message from the server. Double-clicking on the line will also get the message. Note that clicking the Get button does not add this address to your Ok-List. When there is just one item in the list and you click **[Get]** the list will be deleted and the window closed.
- **Add.** Gets the selected message from the server and adds the address to your OK-List. You will be prompted to edit the address, if you wish to accept all addresses from the domain you can delete the username and leave only the "@" followed by the domain. When there is just one item in the list and you click **[Add]** the list will be deleted and the window closed.
- **Del Item.** Removes the selected item from the display. Note that the message is not deleted from the list, only removed from the display to make it easier to read. When there is just one item in the list and you click **[Del Item]** the list will be deleted and the window closed.
- **Del List.** Delete this list and view the next if there is more than one. If there are no more lists the window will close.
- **Close.** Close the window without deleting the list.

### 9.3 Address Book.

The UUPlus Console Address Book is very simple, it's features should be self evident.



[UUPlus Mailer, Address Book]

The radio buttons next to the **[To:]**, **[Memo]**, and **[Edit]** buttons specify the action taken when a entry is double-clicked.

To compose a message using the console mailer, or to add an address to the **[To:]**, **[Cc:]**, or **[Bcc:]** fields of the console mailer, select one or more addresses and click the respective button.

Use the **[New]**, **[Edit]**, and **[Del]** buttons as to perform the respective action.

Clicking the **[Memo]** button brings up a text editor for attaching notes to the selected address.

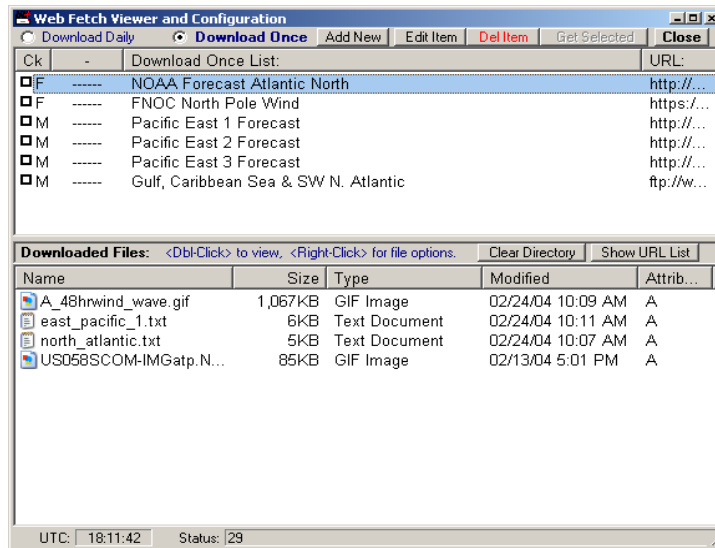
9.4 Web Fetch Viewer and Configuration.

The UUPlus Web Fetch Viewer and Configuration screen is a master piece of fitting to many options into one window, though in boils down to "this is the file I want, get it for me".

There are two sections in the viewer, the upper is either the **Download Once** or **Download Daily** list of URLs. Both lists are empty to start with and you add the files you wish to download to them.

The lower is either the files that have been fetched or a list of possible files to download.

If there are files you wish to get only when you select them, add these to the **Download Once** list. If there are files that you wish to download from one to three times daily, add these to the **Download Daily** list.

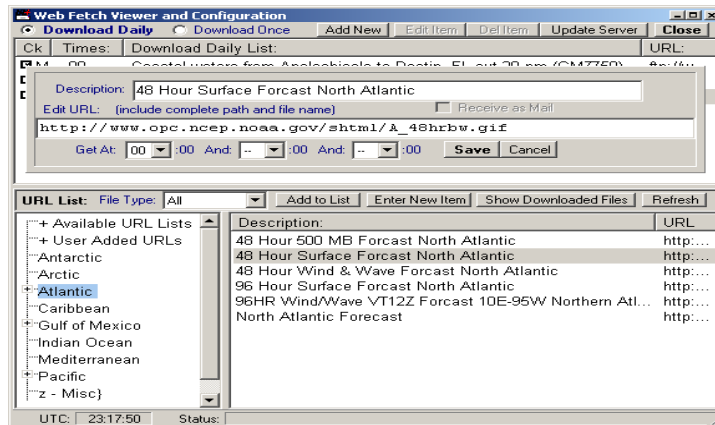


[UUPlus Web Fetch Viewer and Configuration Screen]

To change lists select either **Download Daily** or **Download Once**.

To view downloaded files, double-click on the file in the lower window, or right click for menu options. You can also drag and drop them on the Desk Top or into a suitable viewer or editor. The **[Clear Directory]** button is provided to easily delete all the files in the directory. Note that .zip files might not respond to a double-click, so right-click and select 'Open' for zipped files.

To add new items to the currently selected download list, click the either the **[New Item]** or **[Show URL List]** buttons to display the URL List (a database of available files), then select an area in the left-hand tree list, then select a file in the right-hand list.



[UUPlus Web Fetch Viewer and Configuration Screen, Edit Mode]

If you have the Download Daily list selected, click **[Add to List]** (or double-click on the item), set

the time(s) of day to get the file in the edit window that pops up, then click the [**Save**] button.

If you have the Download Once list selected, double-click on the desired item to add it to the Download Once list, or click the [Get Now] button to do just that and by-pass adding it to the Download Once list. You are given the option to add files to the Download Once list as sort of a "favorites" list, or just get them now (actually during the next call to the server).

### 9.4.1 Download Daily List.

The checked items in this list will be sent to the server when the [**Update Server**] button is clicked and downloaded daily at the times specified. The data will be sent to the server the next time you call.

If you have a daily web fetch running on the server and want to turn it off, un-check all items in the list and click the [**Update Server**] button. This will send an empty list to the server the next time you call and the fetching will stop.

### 9.4.2 Download Once.

The checked items in this list will be sent to the server when the [**Get Selected**] button is clicked and downloaded only once. You can request the file again at any time by checking it and clicking [**Get Selected**]. The request will be sent to the server the next time you call.

Note that if you check more than one item there is the possibility that not all items will come in during the call. This is somewhat unpredictable due to the nature of the Web. There is also the possibility that none of the files will be sent. If this is the case, you may get the file or an error message a subsequent call.

### 9.4.3 [Enter New Item] (URL List Window).

Click the [**Enter New Item**] button to type in a new URL. Enter a description and the URL. You can paste in the URL using <ctrl-v> or right-click for the edit menu.

If Download Daily is selected, you can specify up to three times daily to get the file, select the times with the "**Get At:**" fields. "00" is midnight, the times are relative to GMT, so if you know the file is posted daily at 0400, set Get At: to "05". Times are not relevant to the Download Once list and are hidden.

If Download Daily is selected, you can specify to have text and HTML files mailed to you so you can read them in your mailer rather than accessing them in the Fetch Viewer. This option is not available for items in the Download Once list.

If you are requesting the file more than once daily or you don't call in for several days, the existing file waiting for you on the server is refreshed so you only download the latest version of the file rather than the last three weeks of the same weather map and you haven't called in because your antenna took a wave or lightning strike, or your phone packed up after it fell in the bilge, swamp, or took a round from the local insurgency.

If the entry does not exist in the lower URL list it will be added to the beginning of that list.

When you add a new item you can find it later by selecting "User Configured Items" in the left-hand "tree" list.

### 9.4.4 [Edit Item].

Click the [**Edit Item**] button to edit the currently selected item in the upper list.

### 9.4.5 [Del Item].

Click the [**Del Item**] button to delete the currently selected item in the upper list. There is not a "are you sure" prompt on this one, so mind errant clicks on the button.

### 9.4.6 [Update Server] / [Get Selected].

Clicking the [**Update Server**] or [**Get Selected**] buttons (whichever is visible) will queue send the currently checked items to the server during the next call.

If Download Daily is selected and no items in the list are checked, your Web fetching on the server will be turned off.

If Download Once is selected and no items in the list are checked this button is disabled.

### 9.4.7 [Close].

Closes the window without updating the server, but any changes you have made are saved locally.

### 9.4.8 Upper List Window.

The upper list displays either the Download Daily or Download Once lists. The columns are as follows:

- **Ck** The first column displays the selected check box and a flag that specifies if the item is to be downloaded as a file or sent as a mail message. Only text and HTML files can be sent as mail, all others are downloaded.
- **Times:** If Download Daily is selected, this column displays the time(s) of day the file will be fetched by the server. The server side Web fetcher checks the daily downloads once an hour at one minute past the hour. There are three fields of two characters each, so "000816" indicates that the server will download the file at midnight, 0800, and 1600 GMT. "04----" indicates the file will be downloaded once at 0400. Note that if your computer's clock and time zone is set correctly for your current location, UTC is displayed in the Status bar.
- **Download Daily/Once.** This column indicates which list is selected and displays the description of the URL.
- **URL.** The complete URL to the file in the format "http://site.name/path/filename.ext".

### 9.4.9 Lower Window.

The lower window will display either the downloaded files (if any) or a list of possible files to download.

To view downloaded files, double-click on the file in the lower window, or right click or menu options. You can also drag and drop them on the Desk Top or into a suitable viewer or editor. The **[Clear Directory]** button is provided to easily delete all the files in the directory.

### 9.4.10 URL List.

Clicking **[New Item]** or **[Show URL List]** displays a list of files to download. On the left is a tree view list of categories and regions of weather files, on the right is a list of the available files for the selected category or region. You can also restrict the list to forecasts (.txt, .html, etc.) files, weather maps (.tif, .gif, .jpg), Grib files, and .zip files.

- To return to the file viewer, click **[Close List]**.
- To add a selected item, click **[Add to List]** or double-click the item.

### 9.4.11 Using the Web Fetcher.

The key to effectively using the Web fetcher is having a good list of URLs to download and knowing what they are. There are a number of excellent services that provide weather information for mariners, and one of these might be good to use, however, if you know what you need and where it is on the Web, the Web fetcher will get it for you.

We recommend you spend some time determining the files you will need using the **[Get Now]** button and connect to the server using UUPlus VPN on a high-speed connection before setting sail or heading into the bush. You can also add your own URLs as needed.

### 10.0 Setting up Mailers for use with UUPlus

UUPlus Personal software includes POP/SMTP servers allowing any POP/SMTP mailer to communicate directly with UUPlus Personal Pro. Personal acts as a mail server, allowing you to use your mailer the same way you would while connected through your standard ISP.

#### 10.1 Outlook and Outlook Express.

Microsoft Outlook and Outlook Express are widely used mailers, Outlook Express is usually pre-installed on most Windows computers. The configuration process is similar for both and for simplicity we refer to both as "Outlook:.

1. Open Outlook Express.
2. On the menu bar, select [Tools — Accounts].
3. The Internet Accounts window will appear. Click the [Add] button and select [Mail].
4. Type in your name and click [Next]. This name is what will appear next to your email address in the header.
5. Select "I already have an email address" and enter your UUPlus email address. Click [Next] when finished.
6. Select "POP3" as your incoming mail server.
7. Enter "**localhost**" for your Incoming and Outgoing mail servers and click [Next].
8. Enter your UUPlus account name (username) and password. The password is case-sensitive. Check the "Remember Password" box and click [Next]. Do not check the box for "Secure Password Authentication."
9. In Outlook, you will be asked how you are going to connect to the Internet, select "Connect using my local area network" and click [Next].
10. You are now done configuring Outlook Express. Click [Finish] to save the configuration.
11. Assuming there is no need for any trouble-shooting, you can now send and receive your email to and from UUPlus Personal Pro.

To test sending and receiving mail, make sure UUPlus is running and it's log window is displayed. It is also helpful to size UUPlus and Outlook so you can see UUPlus' log and Outlook at the same time,

1. On Outlook, on the main window, click the [New Message] button to create a test message, address it to your UUPlus address.
2. When finished with the test message, click [Send].
3. If the email "disappears", is not listed in Outlook's Outbox, and UUPlus' log indicates it received and processed a message, then sending works.
4. On the main Outlook window, on the file menu select [Tools — Send and Receive — Localhost (or the account name for the UUPlus server)].
5. This should activate a POP session. Any mail in the UUPlus Personal mailbox (if you sent a message to yourself there should be at least one) should appear in the Outlook Inbox. The process should take less than a second (unless there is a large quantity of mail). If UUPlus Personal is configured to call on mail check, it might automatically begin calling or request you to make a call. If that happens, it means Outlook is communicating to the POP server. You should also see some activity in UUPlus' log window.

### Troubleshooting Outlook.

- If the Windows Dial-up Connection window comes up, requesting to dial a phone number, then Outlook is under the impression that it is supposed to dial somewhere to get your mail. We will need to fix this, so the first thing to try is to configure Windows to never dial.
  1. In Windows, open [Start — Settings — Control Panel]
  2. Find and open [Internet Options].
  3. On the Internet Properties, select the Connections tab.
  4. Check the box for “**Never dial a connection**” and click [OK].
  5. Go back into Outlook Express and click [Send and Receive]. If your inbound mail in UUPlus appears in your Inbox in Outlook Express, then everything is set.
- If the Dial-up Connection window continues to appear, then your UUPlus account in Outlook may be configured to dial. What you should try is to specify how Outlook is going to connect.
  1. On the Outlook menu bar, select [Tools — Accounts].
  2. Select your UUPlus account (probably named localhost) and click [Properties].
  3. Select the Connection tab.
  4. Check the box for “**Always connect to this account using**” and select “**Local Area Network**” from the pull-down box. Click [Ok] when finished. This should turn off the Windows dialer.
  5. Go back into Outlook and click [Send and Receive]. If the dialer keeps popping up, try disabling your other connections in [Tools — Accounts].
- When you click the SEND/RECEIVE button and you get the error message:

The connection to the server has failed. Account: 'localhost', Server: 'localhost', Protocol: POP3, Port: 110, Secure(SSL): No, Socket Error: 10061, Error Number: 0x800CCC0E

The most likely reason is that port 110, which is used by the mailer and UUPlus Personal to communicate, is blocked by a email virus scanner. The solution is to change the port being used by Personal and your mailer.

#### In UUPlus:

1. Open UUPlus Personal Pro.
2. Select [Setup].
3. On the General Tab, find “Local Mail Server Ports.”
4. Change POP from 110 to 109.
5. Click [Done].
6. Shutdown Personal and restart it.

#### In Outlook:

1. Open Outlook.
2. On the menu bar, select [Tools — Accounts].
3. Select your UUPlus mail account, probably named localhost, and click [Properties].
4. Select the [Advanced] tab.
5. Change the Incoming mail (POP3) from 110 to 109.
6. Click [OK] and then [Close].
7. Click [Send and Receive] and see if it now works.

- If the “Connecting to Server” window displays but does not appear to be doing anything, the UUPlus window may be requesting you call now.
- If UUPlus is calling and you get one of the following errors:

“Your POP3 server has not responded in 30 seconds. Would you like to wait another 30 seconds for this sever to respond?”

or:

“A time-out occurred while communicating with the server. Account: ‘localhost’, Server: ‘localhost’, Protocol: POP3, Port: 110, Secure(SSL): No, Error Number: 0x800CCC19

Then you need to change the time-out length, or set UUPlus not to call on mail check.

To change the timeout in Outlook:

1. Open Outlook.
2. On the menu bar, select [Tools — Accounts].
3. Select your UUPlus mail account, probably named localhost, and click [Properties].
4. Select the [Advanced] tab.
5. Change the “Server Timeouts” to its maximum setting (5 minutes).
6. Click [OK] and then [Close].

To change Call on Mail Check:

1. In UUPlus Personal Pro, select [Setup].
  2. On the [General] tab, un-check “Call on Mail Check.”
  3. Click [Done].
- If you continue to have difficulty configuring Outlook or Outlook Express, please contact UUPlus support.

### 10.2 Pegasus Mail.

Pegasus Mail is a free, standards-based electronic mail client suitable for use by single or multiple users on single computers or on local area networks. This is the mailer UUPlus recommends for Outlook users who cannot get Outlook to work. Pegasus Mail has the unique ability to directly access inbound mail and send outbound mail without using the POP or SMTP servers.

#### Installing Pegasus Mail.

##### POP/SMTP Setup.

1. Place the UUPlus CD in the CD-ROM.
2. When the UUPlus installation menu appears, select Pegasus Mail.
3. The Pegasus Mail Self-Extractor will appear. Click [Setup] to run the install program.
4. The Pegasus Mail welcome window will appear. Click [Next] to begin the installation process.
5. Install Pegasus Mail in the location "C:\pmail" and click [Next].
6. Check the boxes for "Start menu" links and "web mailto:" links and click [Next].
7. Click [Finish] to install Pegasus Mail on your computer.
8. Pegasus Mail will be copied onto your computer. When it is finished, click [Exit].
9. The Pegasus Mail icon should appear on your Desktop. Double-click the Pegasus Mail icon to run Pegasus Mail.
10. Pegasus Mail will ask you how you want your account configured. Select the "Single User" option (top).
11. Pegasus Mail will not ask where to install your mailbox. I recommend using "C:\PMAIL\MAIL." It will make Pegasus Mail happier.
12. Pegasus Mail will open the Internet wizard. Click [Next] to configure your account.
13. Type in your UUPlus email address and click [Next].
14. Type "localhost" as the address of your POP3 server and click [Next].
15. Type in your UUPlus account name and password. Your account name is what precedes the "@" symbol in your email address. Click [Next] to continue.
16. Type "localhost" as the address of your SMTP server and click [Next] to continue. Pegasus Mail should correctly guess the address.
17. Select "Network" and click [Next].
18. Your account is now configured; click [Finish] to save the account.
19. To send and receive your mail from UUPlus, click the globe icon with the red and blue arrows.

If Pegasus Mail reports the error that it is unable to connect to the host when you try popping your mail in UUPlus Personal Pro, the most likely reason is that the port 110, which is used by the mailer and UUPlus Personal to communicate, is blocked. The port is being blocked by third-party software, probably a virus scanner. The solution is to change the port being used by Personal and your mailer.

In UUPlus:

1. Open UUPlus Personal Pro.
2. Select [Setup].

3. On the General Tab, find “Local Mail Server Ports.”
4. Change POP from 110 to 109.
5. Click [Done].
6. Shutdown Personal and restart the program.

In Pegasus Mail:

1. Open Pegasus Mail.
2. Select [Tools — Internet Options].
3. Select the Receiving (POP3) tab.
4. Under “Advanced POP3 settings,” change the TCP/IP port from 110 to 109.
5. Click [OK] to save your changes.

Now try popping your mail. You will know it works if your inbound mail from Personal arrives in your new mail folder and your outbound mail is no longer in the queue. Also, if no errors appear then everything should be working.

### User-Defined Gateway Setup.

Note: This mode **will not work** with Windows XP. Windows XP cannot run the DOS program required to setup Pegasus Mail.

If you have been unable to get any mailer to access your mail, Pegasus Mail can be configured to send and receive email directly from UUPlus software without going through the POP and SMTP servers. This configuration requires the use of a DOS program. Please follow these instructions precisely.

If you have already installed Pegasus Mail, **un-install** Pegasus Mail and start from the beginning.

1. Place the UUPlus CD in the CD-ROM.
2. When the UUPlus installation menu appears, select Pegasus Mail.
3. The Pegasus Mail Self-Extractor will appear. Click [Setup] to run the install program.
4. The Pegasus Mail welcome window will appear. Click [Next] to begin the installation process.
5. Install Pegasus Mail in the location “C:\pmail” and click [Next].
6. Check the boxes for “Start menu” links and “web mailto:” links and click [Next].
7. Click [Finish] to install Pegasus Mail on your computer.
8. Pegasus Mail will be copied onto your computer. When it is finished, click [Exit].
9. Open UUPlus Personal Pro.
10. Select [Setup].
11. On the General tab, find and check the box labeled “Use with Pegasus Mail in Gateway Mode.” By checking this, you are turning off the POP and SMTP servers, which are not needed in the User-Defined Gateway mode. If the POP and SMTP servers are not turned off, then unused command files will be created and may cause problems in the operation of the software.
12. Click [Done] and restart UUPlus Personal Pro. You will notice the POP and SMTP servers did not start.
13. Open Pegasus Mail. There should be a shortcut on your desktop.
14. Pegasus Mail will ask you how you want your account configured. Select the “Single

User” option (top).

15. Pegasus Mail will ask where to install your mailbox, I recommend using “C:\PMAIL\MAIL.” It will make Pegasus Mail much happier.
16. Pegasus Mail will open and start the Internet Setup Wizard. Click [Cancel], we do not want to configure the Internet Wizard. Click [OK] to confirm that you want to cancel. You will not be using the POP and SMTP server to access your mail and therefore you do not need the Internet Wizard.
17. On the menu bar select [Tools — Options].
18. This is where you will do a lot of customization and configuration of Pegasus Mail mailer. For now, select the “Advance Settings” section under the “General Settings.” At the bottom change the “Load Windows Internet Services” from “On demand only” to “Never.” This will prevent Pegasus Mail from looking for the POP and SMTP servers.
19. Click [Apply] to save settings and [OK] exit out of “Options.”
20. On the menu bar, select [File — Exit] to close out of Pegasus Mail.
21. Click the [Start] button and select [Run]. On the “Open” line type “c:\pmail\pconfig.exe” and click [OK].
22. A DOS program called “Pegasus Mail Configuration” will open. This program can only be used with arrow keys and the keyboard. The mouse is useless in this program. Scroll down with the arrow keys to “Manage user-defined gateways” and hit the [Enter] key.
23. A box labeled “Defined Gateways” will appear. To define a new gateway, press the [Ins] (Insert) key.
24. Below is a replication of what information needs to be entered to define the gateway. On the second line, substitute “...username” with your username. Substitute username@uuplus.com for your email address. If your username contains non-standard characters such as periods or dashes, do not include these non-standard characters in the username. For example, the username John.Smith will use the path “c:\uuplus\spool\mail\johnsmith.” It is all right to include the non-standard characters on the “Reply address format.” Type in the information and press “Enter” to go to the next line. At the end, you will be asked to accept this data, if everything is entered correctly, press “Y”, otherwise press “N.”

```

Pegasus Mail Configuration v3.42
+----- User Gateway Definition -----+
| Gateway name           : [UUPLUS ]
| *New mail path         : c:\uuplus\spool\mail\username
| Is ? a program to run? : N
| *New mail search mask  : *.msg
| *Outgoing mail path    : c:\uuplus\spool\mqueue
| *Run for outgoing mail :
| *Filename format       : ~d~d.CNM
| Run to validate address :
| *Reply address format  : username@uuplus.com
| Accepts SMTP addresses? : Y
| Simple message headers? : No formatting
| UUEncode attachments?  : Y
| Burst messages?        : N Gateway processes BCC? : Y
| Strip gateway name?    : Y
| Force all mail through? : Y
|
| The name users will use to access this gateway. Addresses will
| be entered in the form GWNAME/address.
+-----+

```

25. When finished, you will be brought back to the “Defined Gateways” list only now a gateway called UUPLUS will be listed. Press [Ctrl-Enter] to save and exit.
26. Scroll down with the down arrow key and select “Exit, saving settings.” Press the [Enter] key.
27. Open Pegasus Mail.
28. Pegasus Mail will give you no indication if the user-defined gateway is working. To test sending an email. Create a new email, and hit the [Send] button. It will appear nothing happened. You will have to click on UUPlus Personal and select [Mail Que]. If everything is configured correctly, your message will appear as a “job” in this queue. To test receiving an email, you will have to call into the UUPlus server using Personal and download your mail.

After the mail is downloaded and routed to your mailbox (in UUPlus), the mail should suddenly appear in the “new mail” folder in Pegasus Mail. If it doesn't, the most common reason is that there is a typo in the gateway.

Go back to step 20 and try to find the typo. Please note: changes in the gateway will not take place until Pegasus Mail has been restarted.

### 10.3 Eudora.

Eudora is a popular mailer developed by Qualcomm.

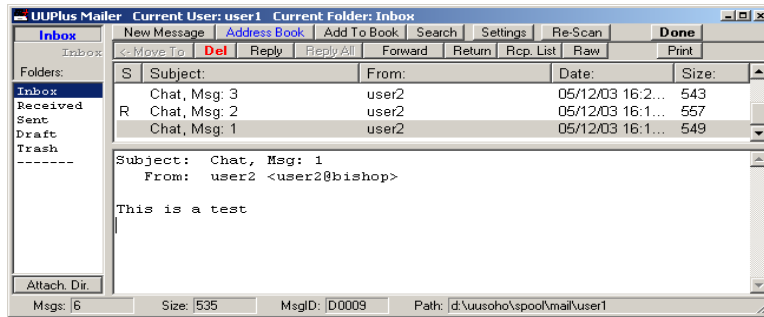
1. Install Eudora if it is not already installed.
2. Open Eudora. If you are opening Eudora for the first time, Eudora will begin the New Account Wizard. Follow the instructions for creating a new account. Click [Next] to begin.
3. Select "Create a brand new account" and click [Next].
4. Type in your name and click [Next].
5. Type in your UUPlus email address and click [Next].
6. Type in your UUPlus account name. Your account name is what precedes the "@" symbol in your email address. Eudora should correctly guess your account name. Click [Next] to continue.
7. Enter "localhost" as your incoming server, choose POP as the type of server, and click [Next].
8. Enter "localhost" as your outbound server. Eudora should already have this listed. Click [Next] to continue.
9. You are now finished with the account wizard, click [Finish] to complete the account.
10. The first time you check your mail, Eudora will prompt you for your password. If Eudora produces an error stating it cannot connect to "localhost" the most likely reason is the port used by the POP server is blocked. Eudora cannot change the port, you will have to use a different mailer or remove the third-party software blocking the port.

## 11.0 The UUPlus Mailer.

The UUPlus mailer is a simple, limited feature mailer built into UUPlus software. It is easy to use and requires little configuration. All mail in this mailer is viewed and composed in plain ASCII text. The UUPlus Mailer does not support formatted text and does not display embedded images. It does, however, support sending and receiving file attachments, as well as including a spell checker.

- **Main Window.**

The UUPlus Mailer is composed of three panels: the Folders panel lists the folders for storing mail, the Contents panel lists the mail in the selected folder, and the Preview panel displays the currently selected message. New mail is always placed in the Inbox folder.



[UUPlus Mailer]

**New Message:** Starts a New Message.

**Address Book:** Opens the Address Book. Each mailbox contains its own address book.

**Add To Book:** Adds the selected email to the Address Book.

**Search:** Searches for any message containing a keyword or phrase. Any messages containing the keyword or phrase will be listed in the Contents Panel.

**Settings:** Opens the Mailer Settings window.

**Re-Scan:** Updates the listings in the Contents Panel. By re-indexing the mailbox, any new mail will appear.

**Done:** Exits the mailer.

- **Folders Panel.**

The Inbox, Receive, Sent, Draft, and Trash folders are reserved and cannot be removed. Any folders below the dotted line are defined by the user and can be added and deleted as needed.

To **view** the contents of a folder, double click on the folder.

**Add Folder:** Right click in the Folders panel and select [**Add Folder**].

**Delete Folder:** Right-click in the Folders panel and select [**Delete Folder**].

- **Contents Panel.**

**Move To:** Moves the selected email to a specified folder. This helps keep the user's mail organized. When the UUPlus Mailer opens, it re-indexes all the mail in the Inbox folder. As the number of messages in the Inbox increases, the longer it will take for the software to open. To prevent this slow down, store mail in a folder other than the Inbox.

**Del:** Moves the selected email to the Trash folder.

**Reply:** Creates a reply to the sender of the selected email message.

**Reply All:** Creates a reply to all address (except yours) in the To: line and Cc: line of the selected email message.

**Forward:** Forwards the selected email message to a new recipient.

**Return:** Bounces the selected email message back to the sender.

**Raw:** Displays the message in raw mode. The raw mode will show all formatting code.

**Print:** Prints the selected email message.

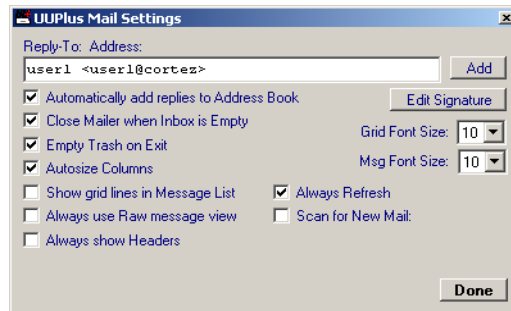
- **Preview Panel.**

By double clicking on a message in the Contents panel, the email message will appear in its own window.

Save Attachment: Saves the attachment to a folder. The attachment can then be opened.

- **Mail Settings.**

The mail settings contain all the individual settings for your mailbox. These settings apply to your mailbox only. If you are opening a mailbox for the first time, the Mail Settings window will automatically appear. Otherwise click **[Settings]** to open the Mail Settings.



[UUPlus Mailer Settings]

**Reply-To Address:** The address which will display on the “From” line in your mail. This address will be used to route mail back to your mailbox when somebody replies to mail you sent.

**[Edit]** To the right of the Reply-To field is an edit button. The UUPlus mailer allows you to enter up to three alternate addresses for the From: field. Clicking the Edit button brings up a text editor where you can add up to three more address, the first address in is your default Reply To address. Be sure to format the addresses you enter correctly.

**Edit Signature:** Allows the user to edit the signature file. The signature file contains information that needs to be added to every outbound message.

**Automatically add Replies to Address Book:** When checked, addresses you reply to will be automatically added to the address book.

**Close Mailer When Inbox is Empty:** Closes the UUPlus Mailer automatically when there is no longer mail in the Inbox.

**Empty Trash on Exit:** If you want deleted mail to actually delete on exit, check this option.

**Autosize Columns:** The mailer will size the Subject, Sender, Date, and Size columns to fit the mailer window size.

**Show grid lines in Mail Boxes:** Displays grid lines in the pane listing mail.

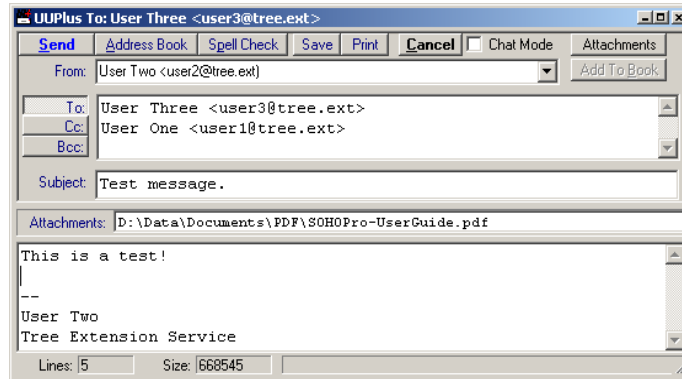
**Always Refresh.** Check this to always refresh the message list after a call, regardless of what window has focus. If you are using “Chat” mode, check this option.

**Always use Raw Message View:** Displays the selected email in raw mode. Any formatting code or attachments will be displayed as ASCII characters.

**Scan for New Mail:** While open, the mailer scan for new mail while the mailer is open.

- **Composing Mail.**

The UUPlus mailer features a basic message composer. This mailer is designed for satellite email so it sends messages in plain text, doesn't support in-line graphics or all of the rest of the goodies that bandwidth hogging mailers support.

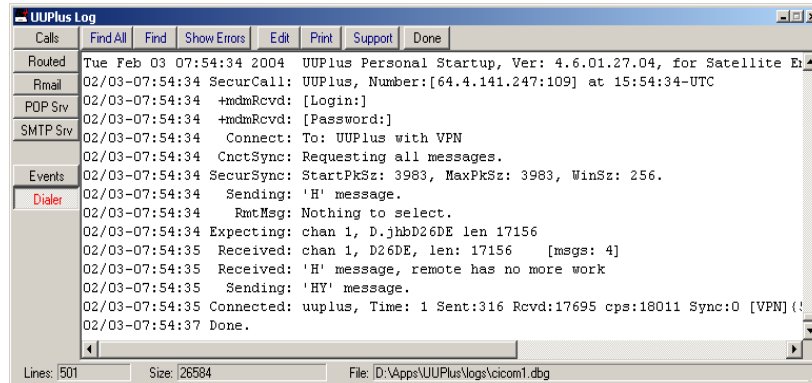


[UUPlus Mailer, Composing Mail]

- **Send.** Sends the message. You can also use the <ctrl><Enter> short-cut keys to send. If you have not entered an address you will be prompted to do so.
- **Address Book.** Click to bring up the Address Book.
- **Spell Check.** Spell checks the message. You can also set your spell checking options.
- **Save.** Saves a copy in the Draft folder. Note that messages are not automatically saved.
- **Print.** Prints the message body.
- **Cancel.** Close the mail composer without sending or saving the message.
- **Attachments.** Brings up a file selector. You can also just drag and drop attachments on the composer. A window will appear showing the attached files. To delete an attached file, select it, right-click and click Delete.
- **Add To Book.** Add the addresses in the To: and Cc: fields to the Address Book. Note that you can have this done automatically.
- **From:** The composer supports up to 4 From: lines, use the drop-down box to select. See section 18.5 for more information.
- **To:, Cc:, Bcc:** Click the appropriate button for To:, Cc: and Bcc: (blind cc) addresses. Note that you must have a To: address.
- **Subject:** The subject for the message.

## 12.0 UUPlus Logs.

UUPlus records most of what it does in logs. These logs can be viewed by clicking the **[Logs]** button in the UUPlus console.



[UUPlus Log Viewer, Personal version]

There are two types of logs, “record keeping” and “debugging”. The Call and Routed logs are for record keeping, the rest are used primarily for debugging.

Entries in the logs start with a time stamp, with the exception of the Call log, which first has the line number followed by the time stamp. The log segments shown here have this time stamp removed with the exception of the call log so the entries will fit on the page.

### 12.1 Call Log [Calls]

UUPlus Personal uses a single file for all calls. The call log is in the following format:

```
line time-stamp site time sent rcvd cps sync cntmsg pkts
```

**line.** The line used in the call. In Personal the line will always be 1.

**time-stamp.** The month, day, hour and minute of the call.

**site.** The site connected to.

**time.** The off-hook time in seconds.

**sent.** The number of bytes sent in the session. Note that in the case of failed connections this number is cumulative and indicates the progress for the combined connections.

**rcvd.** The number of bytes received in the session. Note that in the case of failed connections this number is cumulative and indicates the progress for the combined failed connections.

**Cps.** The characters per second rate for the session.

**sync.** The time, in seconds, used for the modems to negotiate the connection.

**[msg].** The CONNECT message, if any, received by the modem. This is primarily used by answer sites to determine the remote modem type that called.

**{#}.** The maximum number of un-acknowledged packets (window size) used in the connection.

Examples:

```
1) 02/09-07:50 uuplus 64 Sent:3336 Rcvd:3200 cps:217 Sync:34 []{21}
1) 02/11-08:00 uuplus 1 Sent:2828 Rcvd:5484 cps:8312 Sync:0 [VPN]{6}
```

### 12.2 Routed Log [Routed]

The Routed log is a summary of all messages processed, one entry per message. The entry is a duplicate of the final entry for a job in the rmail log.

The general format of the routed log is:

```
timestamp jobname placed sender recipient length
```

**jobname** The inbound or starting job name.

**placed** Either “local” if the mail is placed in a local mail box, “sitename” if spooled to a UUPlus site, or “internet” if spooled to an SMTP server.

**sender** The address the message is from.

**recipient** The address or local user the message is to. If the message is to a local user, the mailbox ID is included. This ID is also recorded in the POP log or if the user is remote, in the Cico log.

**length** The uncompressed message size.

Examples:

```
D03D7 local, From:[user@domain.ext] To:[user1:D03D7] Len: 8118
D0193 uuplus, From:[user1@uuplus.com] To:[user@domain.ext] Len: 1068
D0015 internet, From:[user1@uuplus.com] To:[user@domain.ext] Len: 13407
```

If you have any entries in the Inbound Mail Filter file there will also be entries like this:

```
Kill: To: user1@uuplus.com From: spam@spammer.org Found:[spammer.org]
```

## 12.3 Rmail Log [Rmail]

The Rmail log records in some detail how mail is processed and routed. There are several processes associated with mail routing, such as “uuxqt”, which is the process that reads commands from a remote system and executes them. “uzip” is the un-zipping process, “ubat” un-batches the file into individual messages, and “mail” (actually “rmail”, for “route mail”) is the process that determines where to copy a message to, either to a local mail folder, spooled to a UUPlus (UUCP) site, or placed in the outbound mqueue (mail queue) directory for delivery via SMTP.

The general format of the rmail log is:

```
timestamp process jobname [information][action taken]
```

Note that the job name, sometimes referred to as the message ID, corresponds to the file name of the message or batch file. This does not necessarily have any relationship to the message ID listed in the header of a mail message. UUPlus uses a sequenced 4 digit hexadecimal number in the range of 0001 to FFFF, proceeded by a “D” character, for file names to insure that no two will ever be the same (unless you keep some 65,000 messages in a single directory...)

The following log segment shows processing an inbound mail batch from another UUPlus site, in this case the site name is “uuplus”.

```
-- Rmail started --
UXQT -- uuplus
UXQT D06B4 bMail, Msgs: 4
UZIP D06B4 (19811 -> 66721) 70%
UBAT D06B4 From:[Full Name <user@domain.ext>] To:[user1]
MAIL D03CE local, From:[user@domain.ext] To:[user1:D03CE] Len: 41941
UBAT D06B4 From:["Full Name" <user@domain.ext>] To:[user1]
MAIL D03CF local, From:[user@domain.ext] To:[jhb:D03CF] Len: 7335
UBAT D06B4 From:["Full Name" <user@domain.ext>] To:[user1]
MAIL D03D0 local, From:[user@domain.ext] To:[user1:D03D0] Len: 10435
UBAT D06B4 From:[<user@domain.ext>] To:[user1]
MAIL D03D1 local, From:[user@domain.ext] To:[user1:D03D1] Len: 7505
```

The next log segment shows processing a locally generated message being added to a batch file to be sent to another UUPlus site, in this case the site name is “uuplus”.

```
MQUE --
MQUE D0192 From:[user1@uuplus.com] To:[user@domain.ext]
MAIL D01F2 BCHD uuplus, From:[jhb@uuplus.com] To:[user@domain.ext] Len: 6380
```

Following are some of the error and informational messages and an explanation of what caused

them.

```
MAIL ERROR: (L) Could not copy attachment: [input file] to [output file]
MAIL Attachment not included: d:\uuplus\spool\attach\A.uuplusF0030
```

The above is caused when a message arrives without its attachment it is generally caused by the call being cut off after the mail batch was received but before the attachment was fully received. In this case the attachment will be sent later when all of it arrives.

```
ZIP: ERROR Could not zip: d:\uuplus\spool\attach\SUNDAY
```

The mostly likely cause of the above is that the mailer (and perhaps the user that was running the mailer) did something unanticipated when composing the message and the attachment was corrupted, or not even included, when the original message was sent.

```
ATCH Decode: file not encoded: d:\uuplus\spool\attach\A.sitenameF4656
ATCH Could not Decode: d:\uuplus\spool\attach\A.sitenameF4656
```

The above was caused by a malformed email attachment. When the sender forwarded the message, the mailer they were using used the wrong MIME format to include the message, rendering it unreadable before it ever left their computer.

```
UXQT F0036, Route Attach To: addr::addr, File: filename.ext, From: daemon
ATCH To:[address] From:[address] File:[ filename.ext ]
```

An attachment was received after its host message and was routed to the recipient.

```
MAIL Warning: Unknown local user <localuser>
```

Someone tried sending a message to a unknown user.

```
MAIL D82D2 Warning: Unknown site: sitename
```

Someone tried sending a message to a unlisted sub-domain (site).

```
MAIL D8291 Warning: Message exceeds size limit of 500000 bytes. (Len: 923920)
MAIL Returning message to: user@domain.com
```

An over sized message was sent to a local user and returned.

```
MAIL D8812 Notice: message To: user@address.ext Deleted.
```

A message to an address listed in the aliases file was killed.

```
ZIP: F45C3 (40448 -> 9015) 77%
UZIP D00EB (3715 -> 13841) 73%
```

A 40k file compressed to 9k and a 3.7k file unzipped to 13.8k.

### 12.4 POP Server Log [PopSrv]

The POP server log shows the actions of the POP server. You will normally only need to view the log to trouble shoot a POP connection or if you think a message disappeared and you are trying to find out what happened to it.

The **session**, **action**, **message number**, **sender**, **length**, and **message ID** are recorded in the log. Note that the ID indicated in this log corresponds to the message ID that follows the username in the routed log.

```
POP3 [uuplus.com] listening on port 110
--
0) Connection request from jhb [127.0.0.1]
0) Sent msg[1] From:[Full Name <user@domain.ext>] Len:[51592] ID:[D031F]
0) Sent msg[2] From:["Full Name" <user@domain.ext>] Len:[2221] ID:[D0320]
0) Disconnected.
```

Most of the error messages in the POP log are beyond the scope of this manual and should be referred to UUPlus tech support if you don't understand them. The following message, however, should be self-explanatory.

Please close all UUPlus programs restart UUPlus. If the problem persists there may be another program preventing UUPlus from working correctly which will need to be turned off, or TCP/IP may be incorrectly configured or not installed.

Sometimes certain mailers seem to loose messages. If this seems to be the case, the POP log shows definitively if the message was delivered to the mailer or not, and if it was, the message is somewhere in the mailer. Note that the most common cause for loss of messages in a POP session is that the user has neglected to move messages from the inbox to another folder and often has hundreds of messages in their inbox, only 6 to 10 or so are visible at any one time.

### 12.5 SMTP Server Log [Smtprsv]

The SMTP server log shows all inbound messages received via SMTP. The general format of the SMTP log is:

```
timestamp session address action [jobname len sender recipient]
```

**session.** Indicates which one of any concurrent sessions the log entry is for.

**address.** The IP address of the remote client.

**action.** The action being logged

**jobname.** The message ID for this message. There will be a match for a MQUE job in the rmail log.

**len.** The length of the message as received.

**sender.** The sender as listed in the SMTP header envelope.

**recipient.** The recipient as listed in the SMTP envelope.

Example:

```
SMTP [uuplus.com] listening on port: 25
0) [127.0.0.1] Accepted, relay OK.
0) [127.0.0.1] Rcvd: D0168, len: 3176, FROM:<user1@domain.ext>
                                         TO:<user@mydomain.ext>
```

### 12.6 Events Log [Events]

The events log lists calling activity as well as other information important for certain aspects of debugging. Under certain circumstances UUPlus tech support may request this information to determine the cause of a problem. The information is not normally needed by the end user.

Sample entries:

```
-- Load Cron Events --
Cron start cico1 HF PID: 840
Cron restart: cico1 PID: 1312
Cron kill 1 PID: 1312
Call Line1 CICO uuplus @ 1001
Calling: uuplus @ 1.[auto] [TCS], PID: 1008
Calling: uuplus @ 64.4.141.247 [VPN], PID: 1708
Shutdown...
```

### 12.7 Cico Logs [Cico 1]

“Cico”, which stands for **C**opy **I**n, **C**opy **O**ut, is the program that transfers the mail to and from your system. It is basically a file copy mechanism designed for satellite phones, HF modems, or any either slow, error prone, or expensive connection. Cico also handles the modem configuration and dialing.

The following log shows receiving 12 messages in 2 batch files with a 25k message size limit using a Globalstar phone.

```
Mon Feb 10 10:35:45 2003 UUPlus uuCico startup.
```

## UUPlus Personal User Guide



```
Version: UUPlus Personal 4.4.02.06.03
Modem: +Globalstar GSP-1600 Satellite Phone on COM4 38400 bps
Calling: UUPlus, Number:[18055349398] at 02/10-10:35:47
Connect: To: UUPlus @ 9600 bps.
CnctSync: Requesting all messages under 25k bytes.
CnctSync: StartPkSz: 256, MaxPkSz: 256, WinSz: 256.
Sending: 'H' message.
Interact: Done
Expecting: chan 1, D.jhbD06AB len 7121
Expecting: chan 2, D.jhbD06AA len 20728
Received: D06AB, len: 7121      [msgs: 2][jhb]
Received: D06AA, len: 20728    [msgs: 10][jhb]
Received: 'H' message, remote has no more work
Sending: 'HY' message.
Connected: uuplus, Time: 68 Sent:0 Rcvd:27849 cps:773 Sync:32 []{18}
Done...
```

The above log segment starts with a full date statement when Cico was started.

**Version:** The UUPlus version number.

**Modem:** The modem name, comport, and the data rate to the modem.

**Calling:** The site and the number dialed (in [brackets]).

**Connect:** The remote site name and actual speed of the connection.

**CnctSync:** The requested protocol parameters, including the size of messages to download.

**Sending:** Commands and files to be sent to the remote.

**Interact:** Interactive mode messages.

**Expecting:** Files we are expecting from the remote.

**Received:** Commands and files we have received from the remote.

**Connected:** Summary of the call. This is also recorded in the Call logs.

Debug mode level logs are far more detailed. Here are some of the things you will see.

Our current debug level:

```
Startup: Debug Level: 5
```

Modem configuration, this one regarding flow control:

```
Modem: Using Hardware flow control
```

Modem configuration, the init string:

```
Modem: configCmd: ATZ|ATE0V1Q0X4&C1|AT&W0
```

Modem initialization, sending a carriage return:

```
Modem: Send: <CR>
```

Modem initialization response:

```
i-mdmRcvd: [OK]
```

Modem initialization, sending the init string:

```
Modem: Send: [ATE0V1Q0X4&C1]
```

A listing of our complete chat script:

```
ChatScript: <" <CR> ogin: user1 ssword: letmein >
```

Setting timeout for modem sync:

```
LoginTime: 45 secs.
```

The complete dial string including the AT command used.:

## UUPlus Personal User Guide



```
DialStr: [ATDT0018055349398]
```

The connect message from the modem:

```
c-mdmRcvd: [CONNECT 9600]
```

Setting the timeout for login:

```
MastrStrt: 45 seconds for login.
```

Sending a carriage return to let the remote know we are alive:

```
Sending: <CR>
```

The prompt we are expecting to receive, note that this is a partial string to allow for dropped characters:

```
Expecting: ogin:
```

We received the login prompt from the remote:

```
+mdmRcvd: [Login:]
```

Sending our response to the login prompt:

```
Received: 'ogin:', sending: user1
```

The next prompt we are expecting to receive, note that this is a partial string to allow for dropped characters:

```
Expecting: ssword:
```

Didn't get what we expected, so report it to the log and wait for our expect string (note that the remote keeps sending "Login:" until it gets something from us):

```
-mdmRcvd: [Login:]
```

We received the password prompt from the remote:

```
+mdmRcvd: [Password:]
```

Sending our encrypted password:

```
Received: 'ssword:', sending: rq3D/vnQTTxjibtFrt9qlTMPMqZCM4j1w
```

Protocol level parameters, note that these are set dynamically based on connect speed:

```
PktPrms: Buf: 1, Delay: 128, StSz: 244, MxSz: 244, MnSz: 32, MxPk: 80, Hack: 122, RSWn: 128
```

Sending a command packet:

```
<---Send: DATA [2-0] [0-0] [0-1] [5] <STKI>
```

Receiving a message packet:

```
--->Rcvd: DATA [2-0] [0-0] [0-0] [17] <No mail for: jhb>
```

There will also be a number of error messages regarding modem init, login, and account authentication. They are as follows:

```
Modem Command Timeout. Check modem / modem configuration.
```

The modem is not plugged in or not turned on.

```
Login Timer Expired. Call canceled.
```

The remote never answered. There could be a variety of reasons for this, from a modem error that the modem didn't report (such as no dial tone), no circuits available (effects land line, cell phone and satellite phones), the call didn't go through, the remote didn't pick up, the modems didn't sync, or any number of other reasons. This error triggers a re-dial.

```
Error: NO DIAL TONE. Please check modem.
```

Plug the modem in.

## UUPlus Personal User Guide



Warning: Comport not enabled or not found.

You have the wrong comport selected in the modems tab. This is most often caused by not plugging the USP/Serial adapter in before making the call.

Modem ERROR: [ERROR] Please check modem INIT string.

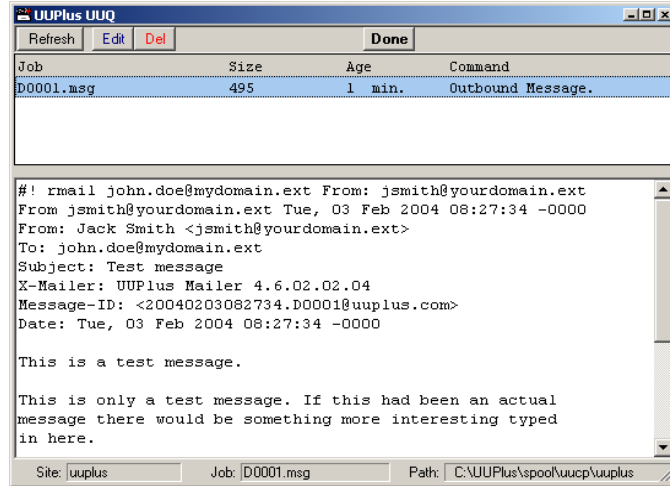
One or more of the AT commands sent to the modem caused an error.

If you are running Win2000 Pro on a Dell laptop and are using an Iridium phone you might get this error, if this is the case, in the Modem configuration tab, check "Ignore Init Err."

In most other cases you should set debug on, click the Call button, and go over the modem response entries to determine the bad init command.

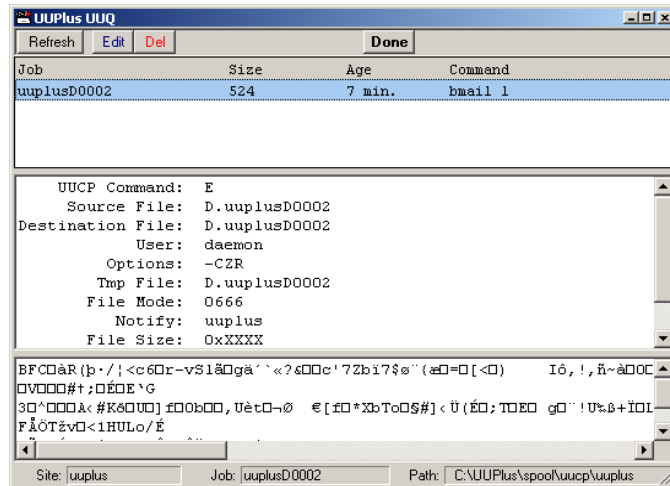
## 13.0 Outbound Queue.

Clicking the [Que] button in the UUPlus Personal console will bring up the outbound queue manager. This program allows you to view, edit, or delete messages to be sent to the server that have not yet been batched, compressed, and encrypted. The buttons should be self explanatory.



[UUPlus Outbound Queue Manager]

Once messages have been batched, compressed, and encrypted (by making a call attempt) the display will change to the following view. Note that at hit point you can only delete the whole batch, you can no longer manage individual messages.



[UUPlus Outbound Queue Manager]